

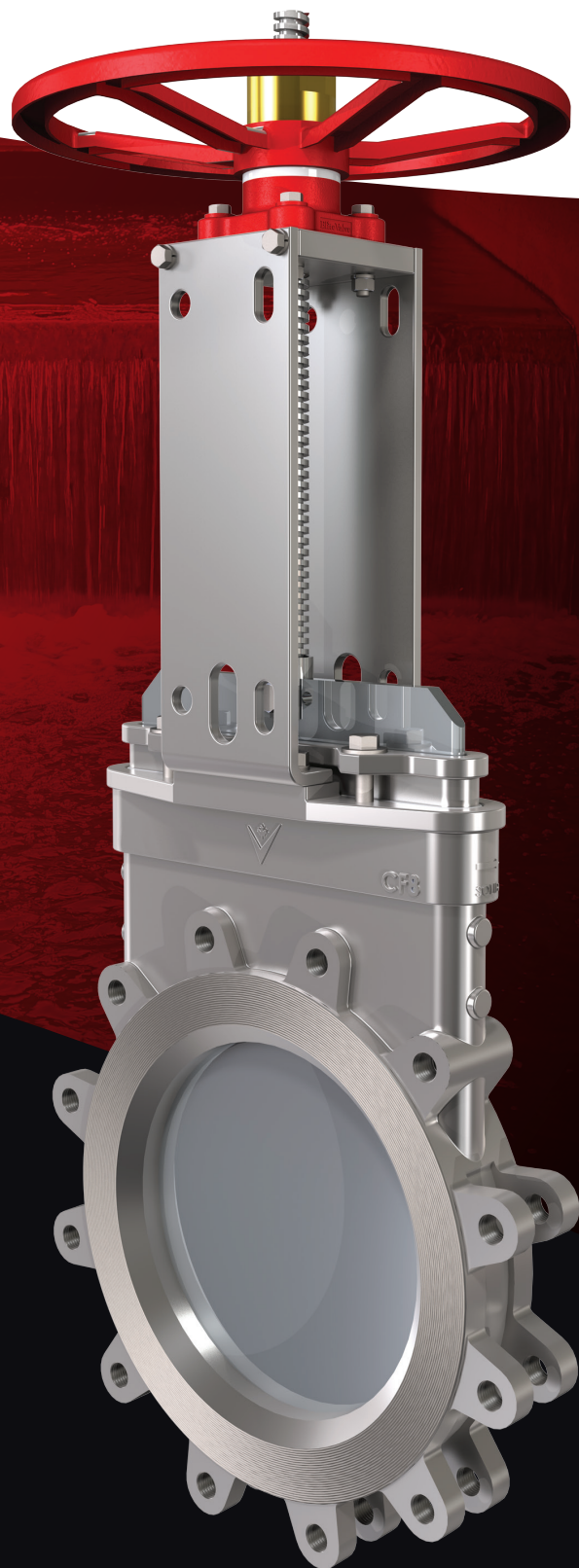
# Elite Valve

[elitevalve.com](http://elitevalve.com)

Customized  
valve solutions  
for the toughest  
of applications

## **E5500 High Performance Knife Gate Valve**

Sizes: 2" to 24" | ISO.9001 Certified



# E5500 High Performance Knife Gate Valve

The E5500 High Performance KGV brings both performance and value to the table. It comes standard in either 304ss or 316ss, with metal or Viton seats. The E5500 is fully rated to ASME Class 150 (285psi) and is designed to MSS-SP135.

## Standard Design Features

- Sizes available: 2"-12" (other sizes available upon request)
- Handwheel operator standard 2"-12"
- Bevel gear operator standard 14" and above
- Cast 304 or 316 stainless steel body
- 304ss rolled ACME stem
- Hardened RC50 gate and seat ring standard
- Self flushing seat design with gate wedge blocks
- Cast 304ss yoke with ISO 5211 mounting pattern for various actuation packages
- Energized PTFE braided PTFE packing standard
- Open/closed lockout pin
- Designed to MSS SP-135 dimensions
- ASME B16.5 Class 150 flange bolt pattern
- Fully rated ASME Class 150 (285psi)

## Available Options

- Gates stocked in hardened 410ss (higher alloys available upon request)
- Gate coatings available in Xylan 1070, hard chrome, stellite etc...
- High temperature graphite packing
- Live loaded packing
- Proximity switches
- Actuators include handwheel, bevel gear, pneumatic/hydraulic cylinder, electric etc...

