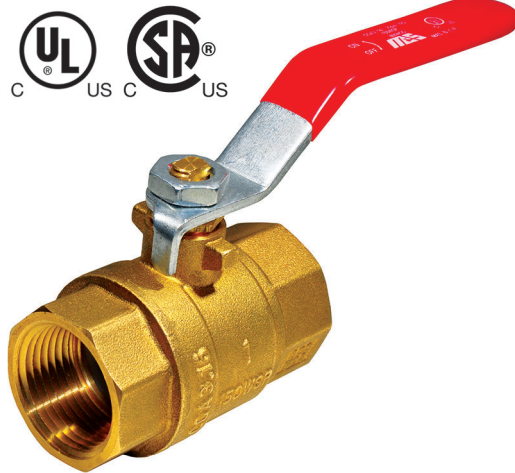


B-1-F

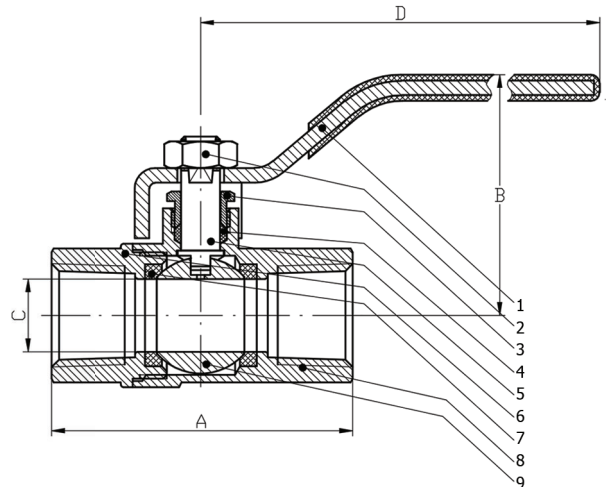
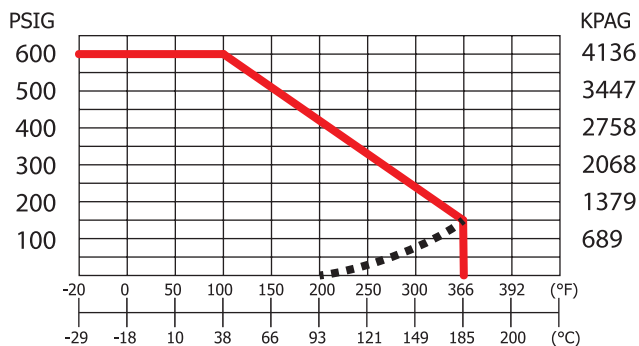
5.1



- Forged 2 piece construction
- Full port
- ASME B1.20.1 NPT ends
- Blowout-proof stem, Chrome plated ball
- Adjustable packing gland
- Class 150 WSP, 600 WOG
- Certified to: CSA 9.1 / ANSI Z21.15 (1/2 PSIG) - 1/4"-2"
- CGA-CR91-002/ASME B16.44 (5PSIG) - 1/4"-2"
- CGA-3.16/ASME B16.33 (125 PSIG) - 1/4" - 2" -40° to 120° F
- cUL, MHKZ7, YQNZ7, YRBX7, YRPV7, YSDT7

- Suitable for use with natural gas, manufactured gas and liquefied petroleum gases (distributed as vapour with or without the admixture of air), or mixtures thereof. Not for use on "Sour Gas".

PRESSURE TEMPERATURE RATING



B-1-F PART / MATERIAL		
NO.	PART NAME	MATERIAL
1	Lever	Steel ASTM A36 ZINC PLATED
2	Lever Nut	Steel ASTM A36 ZINC PLATED
3	Packing Nut	Brass ASTM B124-C37700
4	Packing	PTFE
5	Stem	Brass ASTM B124-C37700
6	Cap	Brass ASTM B283-C37700
7	Seats	PTFE
8	Body	Brass ASTM B283-C37700
9	Ball	ASTM B124-C37700 Chrome Plated

B-1-F DIMENSIONS						
Size	A mm/in	B mm/in	C mm/in	D mm/in	CV	Weight Kg/LBS
1/4	44.5	39.3	10	90	8	0.128
	1.75	1.55	0.39	3.54		0.282
3/8	44.5	39.3	10	90	8	0.133
	1.75	1.55	0.39	3.54		0.293
1/2	54.6	42.3	14.5	90	15	0.193
	2.15	1.67	0.57	3.54		0.425
3/4	60.8	50.0	19.5	98	30	0.285
	2.39	1.97	0.77	3.86		0.628
1	73.6	62	25	118	60	0.479
	2.9	2.44	0.98	4.65		1.06
1 1/4	84	70	32	128	110	0.692
	3.307	2.75	1.26	5.04		1.54
1 1/2	95.5	80	39	140	130	1.072
	3.76	3.15	1.535	5.51		2.38
2	108	85.3	49.5	140	360	1.46
	4.25	3.36	1.95	5.51		3.216
2 1/2	138.6	117	64	220	450	3.397
	5.46	4.606	2.52	8.66		7.482
3	153.3	124.3	74	220	620	4.455
	6.04	4.894	2.91	8.66		9.813

* NOTES:

1) cUL listings are not applicable to 2 1/2"-3"