

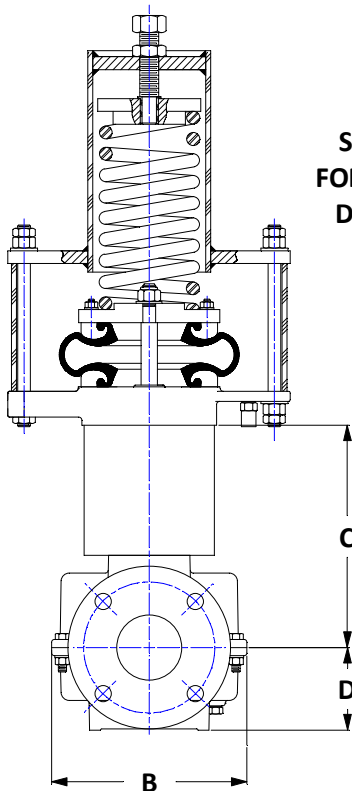
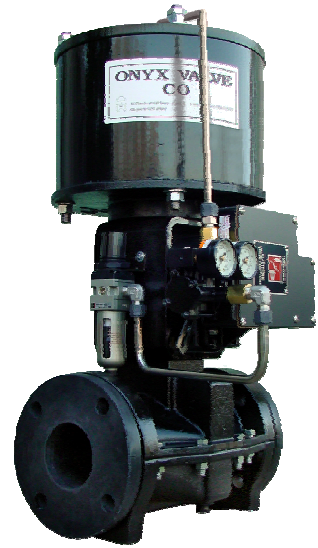
Series CAR

Full Round, Single Pinch, Enclosed Construction, Pneumatically Operated

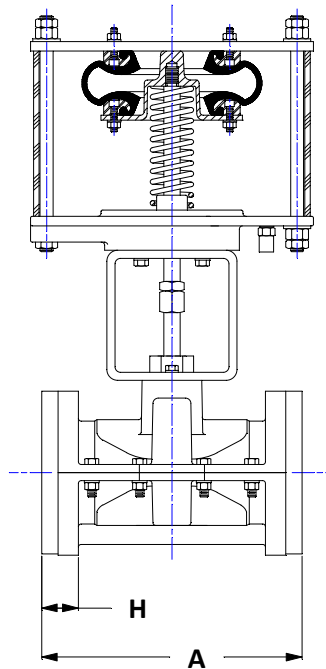
- Clog resistant full round opening.
- Low pressure drop
- No packing
- Drop tight closure
- On/Off or throttling service
- Fail Open or Fail Closed pneumatic actuators
- Long lasting compression molded sleeve

Applications: Ideal for automatic control of abrasive, viscous, and corrosive fluids including wastewater, mine slurry, chemicals, cement, pulp, powder and pellets.

Operation: A full round pneumatically operated valve with the maintenance free Onyx Actuator. The actuator uses a spring for reliable fail-open (PFO) or fail-closed (PFC) operation in a range of sizes. It does not require lubricated air.



SEE PAGE 12
FOR ACTUATOR
DIMENSIONS



Specifications:

- Flanges: ANSI STD. 125/150 lbs
- Housing: Cast iron, ASTM A48, Class 35
- Stem: 303 stainless steel
- Yoke: Carbon steel
- Actuator: Cast iron/PVC

Options:

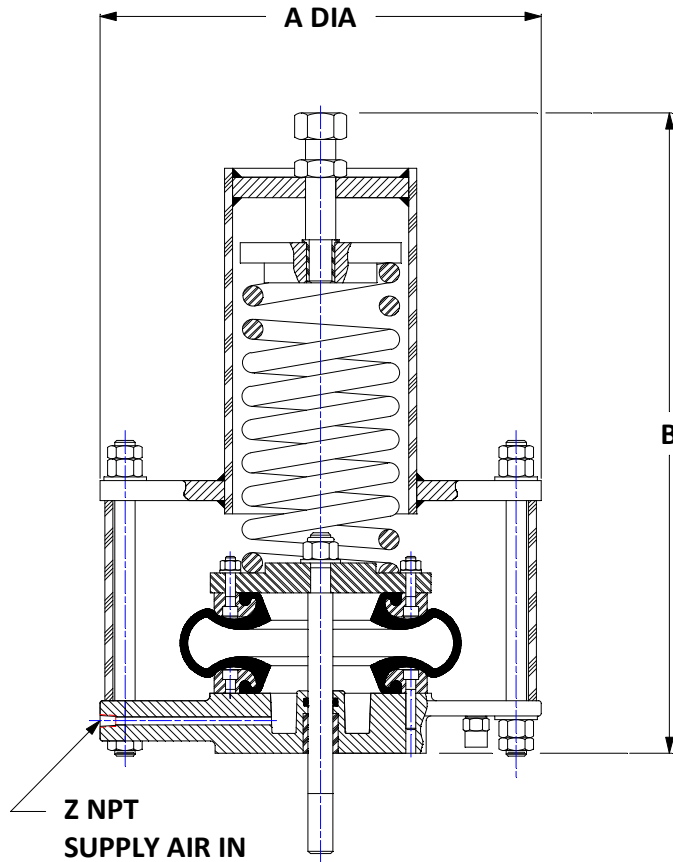
- Epoxy paint
- Sleeve elastomer
- 316 stainless steel stem
- ANSI STD 300 lbs. Flange
- Secondary containment package
- Auxiliary hand wheel
- Positioners
- Solenoid valves
- Limit switches

All dimensions are in inches.

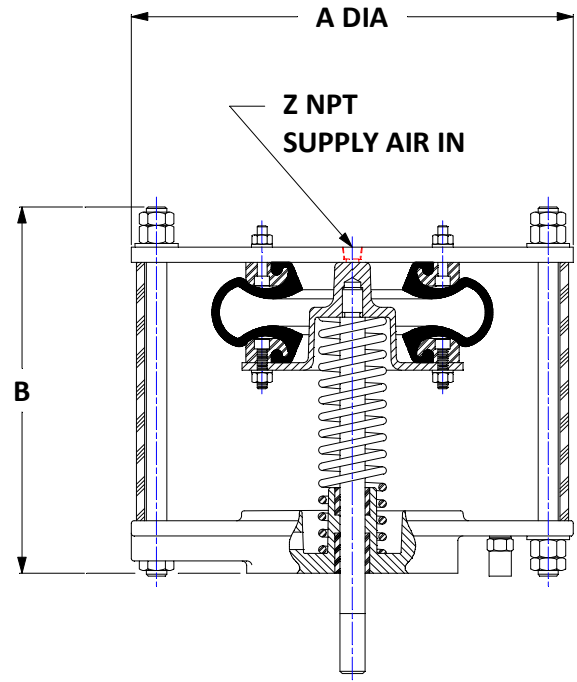
SIZE	1/2	3/4	1	1-1/2	2	2-1/2	3
A	4.25	5.50	5.50	6.50	7.00	7.50	12.00
B	3.75	3.87	4.75	5.25	6.25	9.25	9.00
C	4.93	5.06	9.34	9.62	10.00	14.00	14.25
D	1.93	2.00	2.18	2.56	3.06	3.56	3.81
H	0.69	0.75	0.84	0.97	1.12	1.25	1.69
P Max	200 psi					175 psi	
Wt, lb	10	12	15	21	27	35	47

PFO & PFC ACTUATORS

ACTUATOR WEIGHTS AND DIMENSIONS
(All dimensions are in inches and weights are in lbs.)



PFC ACTUATOR



PFO ACTUATOR

SIZE	8	12	21	30	36	40	70	80	120	200
A DIA	7.50	11.00	11.18	13.56	14.74	19.06	16.37	19.75	23.68	31.75
B (PFC)	10.37	22.12	27.37	34.62	37.12	62.37	50.12	52.62	59.50	N/A
B (PFO)	7.15	9.12	11.00	13.00	16.25		18.50	18.50	24.50	34.93
Z NPT	1/4				3/8		1/2			
WEIGHT (PFC)	25	45	70	156	226	300	355	385	450	N/A
WEIGHT (PFO)	20	40	46	75	119	130	140	145	200	880