

# Elite Valve

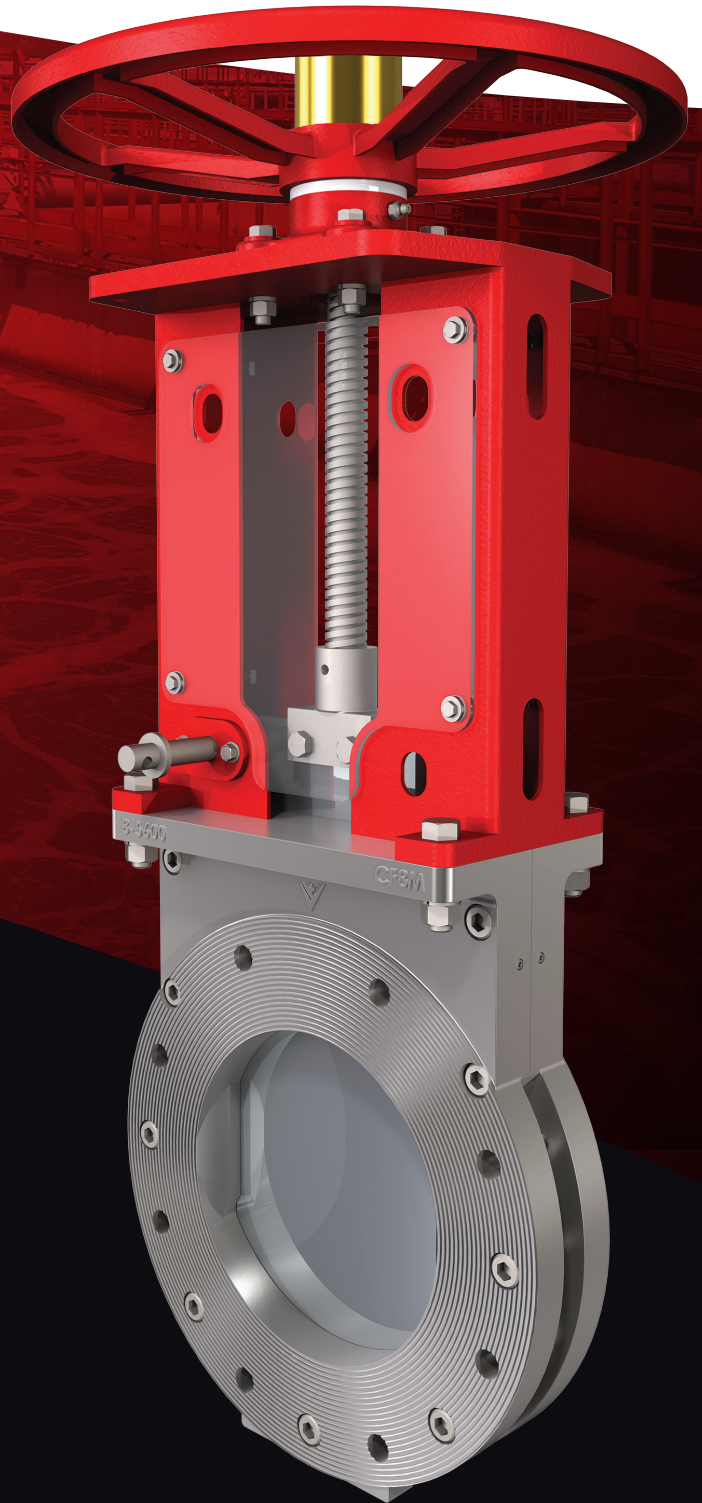
[elitevalve.com](http://elitevalve.com)

Customized  
valve solutions  
for the toughest  
of applications

## **E5600 High-Performance Perimeter Seated Knife Gate Valve**

---

Sizes: 2" to 48" | ISO.9001 Certified



# E5600 High-Performance Perimeter Seated Knife Gate Valve

The E5600 High Performance Perimeter Seated KGV provides ASME Class 150 bidirectional zero leakage shutoff in line or dead end service. It can handle clean or heavy slurries in highly alkaline or acidic solutions. The E5600 highly customizable and dependable, making it the ideal solution for a wide range of industries.

## Standard Design Features

- Sizes available: 2"–24" (other sizes available upon request)
- Handwheel operator standard 2"–12"
- Bevel gear operator standard 14" and above
- Cast 316ss body
- 304ss rolled ACME stem
- 316ss polished gate
- Cavity free dual resilient and metal seat available in Aflas, EPDM, Viton-B stocked
- Fabricated powder coated steel yoke with ISO 5211 mounting patterns for various actuation packages
- Open/closed lockout pin and acrylic dust cover
- Designed to MSS SP-135 dimensions
- ASME B16.5 Class 150 flange bolt pattern
- Fully rated ASME Class 150 (285psi)

## Available Options

- Gates stocked in hardened 410ss (higher alloys available upon request)
- Gate coatings available in Xylan 1070, hard chrome, stellite etc...
- Bolt on pressure bonnet with drain ports
- Secondary transverse seal
- Proximity switches
- Stem boot
- Actuators include handwheel, bevel gear, pneumatic/hydraulic cylinder, electric etc...

