

Technical AK20

PDF Published November 18, 2020

PVDF Piping System

Pipe, Fittings & Valves



CHEMLINE  **PLASTICS**
SUPERIOR FLOW SOLUTIONS

ISO 9001:2015 Certified

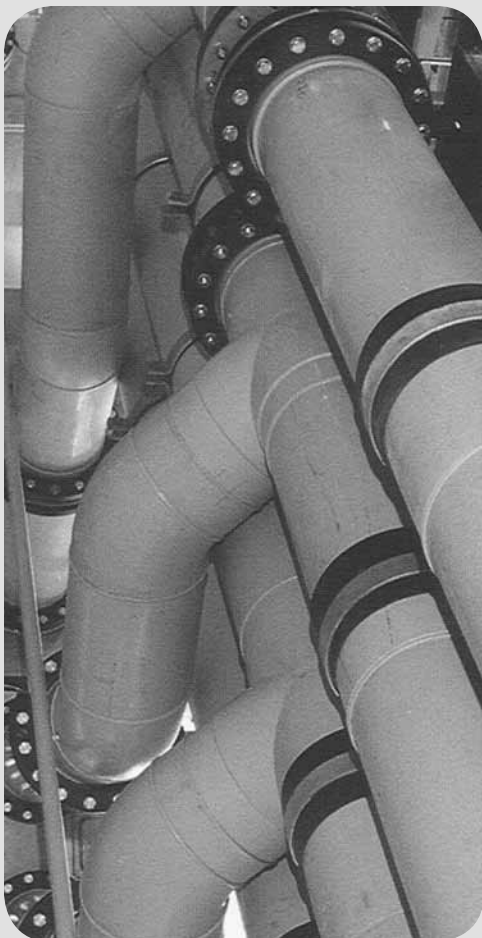
Page

Product Index	2-3
Butt Fusion Pipe & Fittings: SDR 21	4-15
Electro Fusion Couplings: SDR 21	16
Butt Fusion Pipe & Fittings: SDR 33	17-29
Socket Fusion Pipe & Fittings: SDR 7.4	30-36
Valves	37-41

11/20 ©Chemline Plastics Limited 2020
Chemline is a registered trade mark of Chemline Plastics Limited



55 Guardsman Road
Thornhill, Ontario
Canada, L3T 6L2
1.800.930.CHEM (2436)
t. 905.889.7890
f. 905.889.8553
request@chemline.com
www.chemline.com



Product	Product Code	page
Butt Fusion Pipe & Fittings: SDR 21		
Pipe	705	4
90° Elbows – Short Spigot	001	5
90° Elbows – Long Spigot	068	5
45° Elbows – Long Spigot	060	6
45° Elbows – Short Spigot	001.2	6
Tees – Short Spigot	006	7
Reducing Tees – Long Spigot	065	8
Concentric Reducers – Long Spigot	067	9
Concentric Reducers – Short Spigot	007	10
Machined Concentric Reducers	317	10
End Caps – Long Spigot	064	11
End Caps – Short Spigot	302	11
Female Threaded Adaptors – FNPT – Long Spigot	032.1	12
Male Threaded Adaptors – MNPT – Long Spigot	033.1	12
ANSI Stub Flanges – Short Spigot	012.1	13
ANSI Blind Flanges	334.1	14
Unions – Long Spigot	024.5	14
Unions – Long Spigot	024	15
Restraint Fittings	028	15
Electro Fusion Couplings: SDR 21	073	16

Product	Product Code	page
---------	--------------	------

Butt Fusion Pipe & Fittings: SDR 33

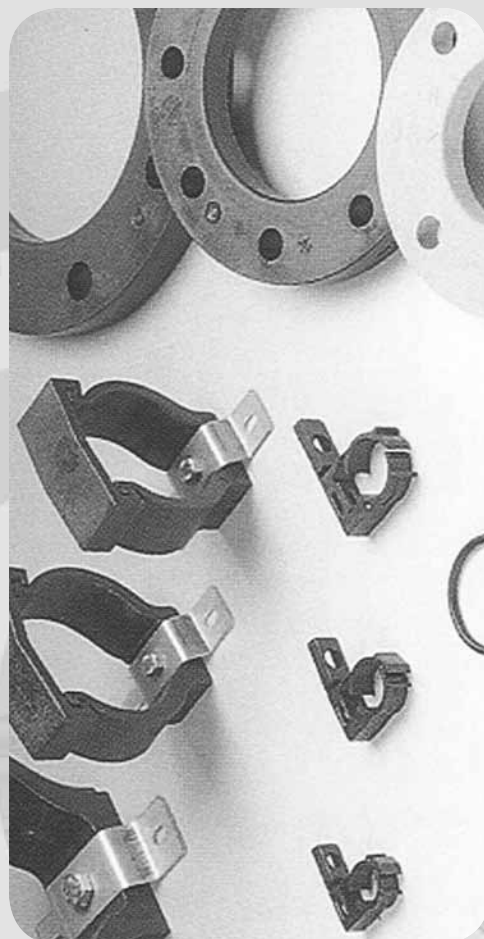
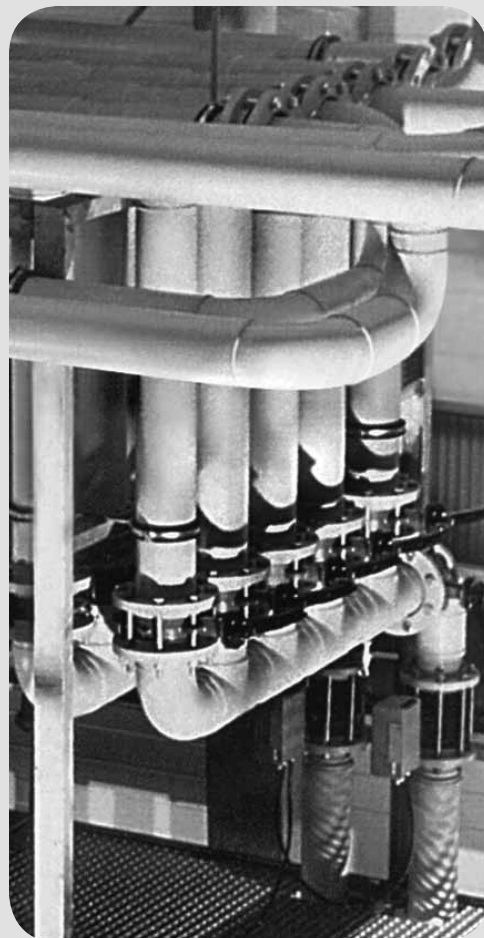
Pipe	705	17
90° Elbows – Short Spigot	001	18
90° Elbows – Long Spigot	068	18
45° Elbows – Long Spigot	060	19
45° Elbows – Short Spigot	001.2	19
Tees – Short Spigot	006	20
Reducing Tees – Long Spigot	065	21
Concentric Reducers – Long Spigot	067	22
Concentric Reducers – Short Spigot	007	22
End Caps – Long Spigot	064	23
End Caps – Short Spigot	302	23
ANSI Stub Flanges – Short Spigot	012.1	24
Restraint Fittings	028	24
Laterals	Y	25
Laterals with 1/8 Bend	YB	25
P-Traps	PT	26
Cleanouts with Plug	CO	26
Reducing Laterals	YR	27
Reducing Laterals with 1/8 Bend	YRB	28
Reducing Sanitary Tees	RST	29
Sanitary Tees	ST	29

Socket Fusion Pipe & Fittings: SDR 7.4

Pipe	705	30
Socket Couplings	053	31
90° Elbows	051	31
45° Elbows	050	32
Tees	056	32
Concentric Reducers	057	33
End Caps	054	34
Female Threaded Adaptors – FNPT	034.1	35
Male Threaded Adaptors – MNPT	035.1	35
ANSI Flange Adaptors	052.1	36
Unions	024.11	36

Valves

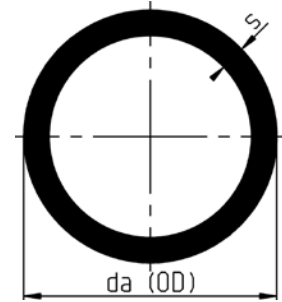
Diaphragm Valves	342.10	37
Check Valves with Spring	336.15	37
T-Diaphragm Valves	343	38-39
T-Diaphragm Valves	Pneumatic	40-41



PVDF Piping System



Pipe SDR 21



Pipe

Product 705

Unpigmented PVDF
Extruded

Tuyau

Produit 705

PVDF Naturel
Expulsé

SDR 21 / ISO S-10/ PN 16				
da OD		s	Weight Poids	Item No.
mm	Nom.	mm	kg/m	
20	1/2"	1.9	0.21	K.705.0020.21
25	3/4"	1.9	0.27	K.705.0025.21
32	1"	2.4	0.44	K.705.0032.21
40	1-1/4"	2.4	0.55	K.705.0040.21
50	1-1/2"	3.0	0.85	K.705.0050.21
63	2"	3.0	1.09	K.705.0063.21
75	2-1/2"	3.6	1.55	K.705.0075.21
90	3"	4.3	2.22	K.705.0090.21
110	4"	5.3	3.32	K.705.0110.21
125	4-1/2"	6.0	4.24	K.705.0125.21
160	6"	7.7	6.96	K.705.0160.21
200	8"	9.6	10.74	K.705.0200.21
250	10"	11.9	16.73	K.705.0250.21

* Weights are per meter, supplied in 5 meter (16.5 ft.) lengths.

* Poids au mètre, fourni en longueurs de 5 mètres (16.5 pieds).

PVDF Piping System

Butt Fusion SDR 21

90° Elbows

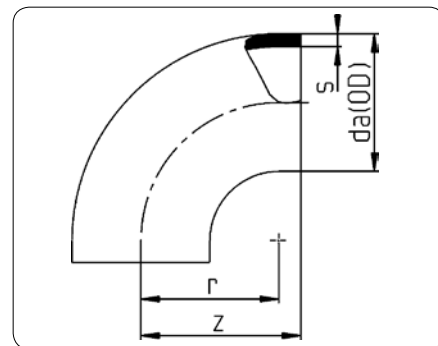
Short Spigot
Product 001

Unpigmented PVDF
Injection moulded
Butt (IR or contact) fusion
or electro-fusion

Coudes 90°

Broche Courte
Produit 001

PVDF Naturel
Moulé à injection
Bout fusion (IR ou Contact)
ou fusion électro-douille



da OD		SDR 21 / ISO S-10 / PN 16				
		r	z	s	Weight Poids kg	Item No.
mm	Nom.	mm	mm	mm		
125	4-1/2"	125	135	6.0	0.93	K.001.0125.21
160	6"	157	181	7.7	2.04	K.001.0160.21
200	8"	196	217	9.6	3.80	K.001.0200.21
250	10"	250	287	11.9	8.21	K.001.0250.21

90° Elbows

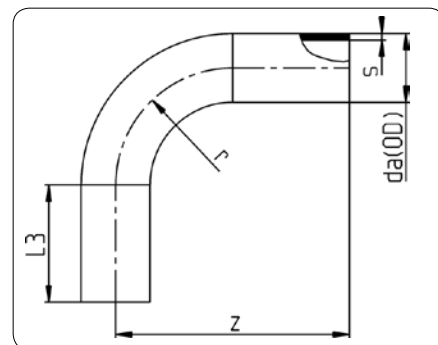
Long Spigot
Product 068

Unpigmented PVDF
Injection Moulded
Contact or IR Butt Fusion

Coudes 90°

Broche Longue
Produit 068

PVDF Naturel
Moulé à injection
Soudure Bout IR ou Contact



da OD		SDR 21 / ISO S-10 / PN 16					Item No.
		r	z	L3	s	Weight Poids kg	
mm	Nom.	mm	mm	mm	mm		
20	1/2"	20	51	33	1.9	0.02	K.068.0020.21
25	3/4"	25	56	33	1.9	0.03	K.068.0025.21
32	1"	32	63	33	2.4	0.06	K.068.0032.21
40	1-1/4"	40	72	36	2.4	0.08	K.068.0040.21
50	1-1/2"	50	84	36	3.0	0.14	K.068.0050.21
63	2"	63	97	35	3.0	0.21	K.068.0063.21
75	2-1/2"	75	100	28	3.6	0.31	K.068.0075.21
90	3"	90	123	34	4.3	0.54	K.068.0090.21
110	4"	110	142	34	5.3	0.98	K.068.0110.21
140	4-1/2"	140	216	73	6.7	2.01	K.068.0140.21
160	6"	160	236	73	7.7	2.86	K.068.0160.21

PVDF Piping System



Butt Fusion SDR 21

45° Elbows

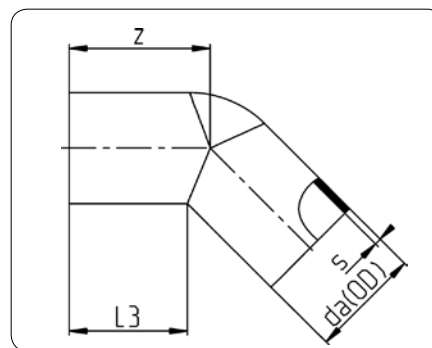
Long Spigot
Product 060

Unpigmented PVDF
Injection moulded
Butt (IR or contact) fusion
or electro-fusion

Coudes 45°

Broche Longue
Produit 060

PVDF Naturel
Moulé à injection
Bout fusion (IR ou Contact)
ou fusion électro-douille



da OD		SDR 21 / ISO S-10 / PN 16				
		L3	z	s	Weight Poids kg	Item No.
mm	Nom.	mm	mm	mm		
20	1/2"	39	43	1.9	0.02	K.060.0020.21
25	3/4"	40	45	1.9	0.03	K.060.0025.21
32	1"	46	52	2.4	0.05	K.060.0032.21
40	1-1/4"	50	58	2.4	0.08	K.060.0040.21
50	1-1/2"	56	66	3.0	0.13	K.060.0050.21
63	2"	62	75	3.0	0.17	K.060.0063.21
75	2-1/2"	32	48	3.6	0.14	K.060.0075.21
90	3"	36	59	4.3	0.26	K.060.0090.21
110	4"	45	68	5.3	0.48	K.060.0110.21
140	5"					K.060.0140.21
160	6"	65	103	7.7	2.53	K.060.0160.21

* Fabricated from moulded 90° bend (Product 001).

* Fabriqué d'un coude moulé 90° (Produit 001).

45° Elbows

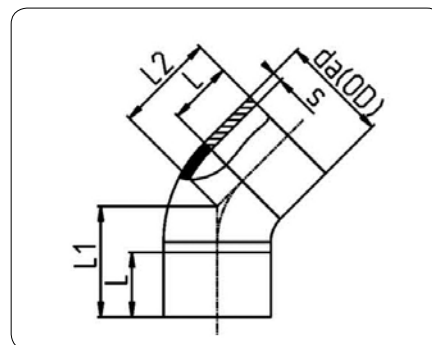
Long Spigot
Product 001.2

Unpigmented PVDF
Injection moulded
Butt (IR or contact) fusion
or electro-fusion

Coudes 45°

Broche Longue
Produit 001.2

PVDF Naturel
Moulé à injection
Bout fusion (IR ou Contact)
ou fusion électro-douille



da OD		SDR 21 / ISO S-10 / PN 16					Item No.
		L2	L	L1	s	Weight Poids kg	
mm	Nom.	mm	mm	mm	mm		
125	4-1/2"	152	100	162	6.0	1.32	K.001.2125.21
200	8"	181	100	202	9.6	4.05	K.001.2200.21
250	10"	204	100	241	11.9	7.25	K.001.2250.21

PVDF Piping System

Butt Fusion SDR 21

Tees

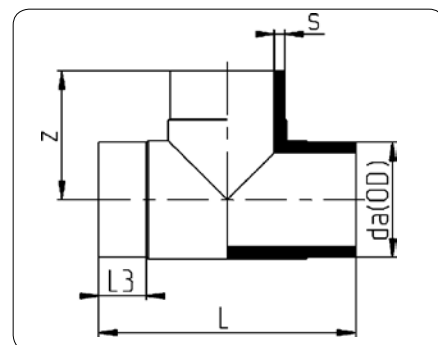
Short Spigot
Product 006

Unpigmented PVDF
Injection moulded
Butt (IR or Contact) fusion
or electro-fusion

Pièces en T

Broche Courte
Produit 006

PVDF Naturel
Moulé à injection
Bout fusion (IR ou Contact)
ou fusion électro-douille



da OD		SDR 21 / ISO S-10 / PN 16					
		L	z	L3	s	Weight Poids kg	Item No.
mm	Nom.	mm	mm	mm	mm		
20	1/2"	70	35	15	1.9	0.03	K.006.0020.21
25	3/4"	80	40	15	1.9	0.04	K.006.0025.21
32	1"	89	45	17	2.4	0.06	K.006.0032.21
40	1-1/4"	100	50	16	2.4	0.09	K.006.0040.21
50	1-1/2"	120	60	23	3.0	0.16	K.006.0050.21
63	2"	149	75	28	3.0	0.26	K.006.0063.21
75	2-1/2"	174	87	28	3.6	0.40	K.006.0075.21
90	3"	181	92	33	4.3	0.63	K.006.0090.21
110	4"	223	110	33	5.3	1.15	K.006.0110.21
125	4-1/2"	279	139	52	6.0	1.22	K.006.0125.21
160	6"	279	140	45	7.7	2.64	K.006.0160.21
200	8"	446	223	89	9.6	7.33	K.006.0200.21
250	10"	500	250	80	11.9	11.40	K.006.0250.21



Reducing Tees

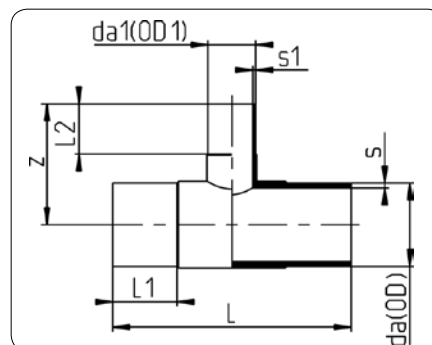
Long Spigot
Product 065

Unpigmented PVDF
Injection moulded
Butt (IR or contact) fusion
or electro-fusion

Pièces en T Réduites

Broche Longue
Produit 065

PVDF Naturel
Moulé à Injection
Bout fusion (IR ou Contact)
ou fusion électro-douille



da/da1 OD/OD1 mm	SDR 21 / ISO S-10 / PN 16						Weight Poids kg	Item No.
	L mm	L1 mm	L2 mm	z mm	s/s1 mm			
63/20	150	28	29	75	3.0/1.9	0.22		K.065.6320.21
63/25	150	28	29	75	3.0/1.9	0.22		K.065.6325.21
63/32	149	28	27	74	3.0/2.4	0.22		K.065.6332.21
90/63	263	75	65	129	4.3/3.0	0.22		K.065.9063.21
110/63	312	85	65	150	5.3/3.0	0.78		K.065.1163.21
110/90	313	87	75	150	5.3/4.3	1.26		K.065.1190.21
160/63	336	100	65	175	7.7/3.0	1.37		K.065.1663.21
160/90	348	97	72	183	7.7/2.8	2.73		K.065.1690.21
160/110	345	96	81	185	7.7/5.3	2.85		K.065.1611.21

Mixed Wall Thickness

Épaisseurs de Parois Combinées

da/da1 OD/OD1 mm	L mm	L1 mm	L2 mm	z mm	Run SDR33/ISO S-16/PN10 BRANCH SDR 21/ISO S-10/PN16		
					s/s1 mm	Weight Poids kg	Item No.
90/63	263	75	65	129	2.8/3.0	0.58	K.065.9063.31
110/63	315	85	65	150	3.4/3.0	0.92	K.065.1163.31
160/63	345	100	65	175	4.9/3.0	1.92	K.065.1663.31
160/90	348	97	72	183	4.9/4.3	2.52	K.065.1690.31
160/110	347	96	81	185	4.9/5.3	2.14	K.065.1611.31

* Mixed wall thickness tees have branch according to SDR 21/ISO S-10/PN 10 and runs according to SDR 33/ISO S-16/PN10.

* Les pièces en té d'épaisseurs de parois combinées ont la branche selon le SDR 21/ISO S-10/PN10 et les courses selon SDR 33/ISO S-16/PN16.

PVDF Piping System

Butt Fusion SDR 21

Concentric Reducers

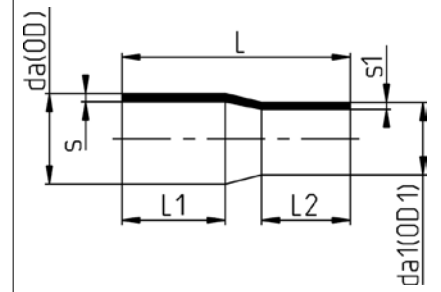
Long Spigot
Product 067

Unpigmented PVDF
Injection moulded
Butt (IR or contact) fusion
or electro-fusion

Réducteur Concentrique

Broche Longue
Produit 067

PVDF Naturel
Moulé à Injection
Bout fusion (IR ou Contact)
ou fusion électro-douille



da/da1 OD/OD1 mm.	SDR 21 / ISO S-10 / PN 16					
	L1 mm	L2 mm	L mm	s mm	Weight Poids kg	Item No.
25/20	20	20	50	1.9/1.9	0.03	K.067.2520.21
32/20	18.5	19	50	2.4/1.9	0.02	K.067.3220.21
32/25	20	20	50	2.4/1.9	0.02	K.067.3225.21
40/20	20	20	55	2.4/1.9	0.06	K.067.4020.21
40/25	20	20	55	2.4/1.9	0.03	K.067.4025.21
40/32	20	20	55	2.4/2.4	0.07	K.067.4032.21
50/20	23	20	60	3.0/1.9	0.04	K.067.5020.21
50/25	24	20	60	3.0/1.9	0.04	K.067.5025.21
50/32	25	20	60	3.0/2.4	0.08	K.067.5032.21
50/40	25	22	60	3.0/2.4	0.05	K.067.5040.21
63/25	25	20	75	3.0/1.9	0.05	K.067.6325.21
63/32	25	18	65	3.0/2.4	0.06	K.067.6332.21
63/40	26	22	65	3.0/2.4	0.06	K.067.6340.21
63/50	25	24	65	3.0/3.0	0.07	K.067.6350.21
75/40	34	34	80	4.3/3.6	0.19	K.067.7540.21
75/50	63	57	80	3.6/3.0	0.20	K.067.7550.21
75/63	65	60	80	3.6/3.0	0.21	K.067.7563.21
90/50	30	25	80	4.3/3.0	0.12	K.067.9050.21
90/63	70	59	80	4.3/3.0	0.26	K.067.9063.21
90/75	75	62	80	4.3/3.6	0.30	K.067.9075.21
110/63	83	57	180	5.3/3.0	0.24	K.067.1163.21
110/90	79	72	180	5.3/4.3	0.53	K.067.1190.21
160/110	95	89	222	7.7/5.3	1.25	K.067.1611.21
250/160	36	36	179	11.9/7.7	2.25	K.067.2516.21



Concentric Reducers

Short Spigot

Product 007

Unpigmented PVDF

Injection moulded

Butt (IR or contact) fusion

or electro-fusion

Réducteur Concentriques

Broche Courte

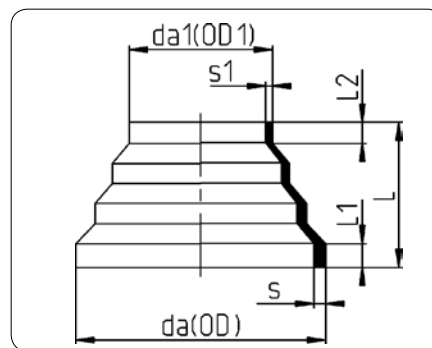
Produit 007

PVDF Naturel

Moulé à injection

Bout fusion (IR ou Contact)

ou fusion électro-douille



da/da1 OD/OD1 mm	SDR 21 / ISO S-10 / PN 16						Item No.
	L mm	L1 mm	L2 mm	s mm	s1 mm	Weight Poids kg	
63/16	56	9	5	3.0	1.9	0.04	K.007.6316.21
110/63	65	11	7	5.3	3.0	0.16	K.007.1163.21

Machined Concentric Reducers

Product 317

Unpigmented PVDF

Machined

Butt (IR or contact) fusion

or electro-fusion

Machiné Réducteur Concentriques

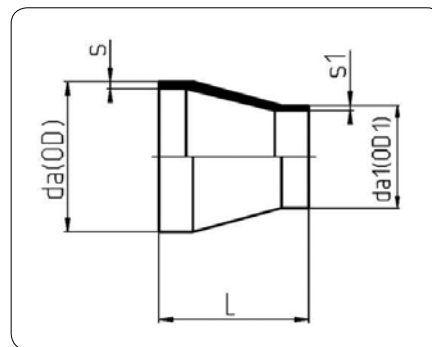
Produit 317

PVDF Naturel

Machiné

Bout fusion (IR ou Contact)

ou fusion électro-douille



da/da1 OD/OD1 mm	SDR 21 / ISO S-16 / PN 10				Item No.
	L mm	s1 mm	s mm	Weight Poids kg	
63/20	80	1.9	3.0	0.06	K.317.6320.21
75/40	80	2.4	3.6	0.12	K.317.7540.21
90/20	80	1.9	4.3	0.15	K.317.9020.21
90/32	80	2.4	4.3	0.16	K.317.9032.21
90/50	80	3.0	4.3	0.12	K.317.9050.21
110/50	100	3.0	5.3	0.21	K.317.1150.21
110/75	100	3.6	5.3	0.30	K.317.1175.21
125/63	100	3.0	6.0	0.41	K.317.1263.21
125/90	100	4.3	6.0	0.85	K.317.1290.21
125/110	100	5.3	6.0	0.47	K.317.1211.21
200/160	120	7.7	9.6	1.25	K.317.2016.21

PVDF Piping System

Butt Fusion SDR 21

End Caps

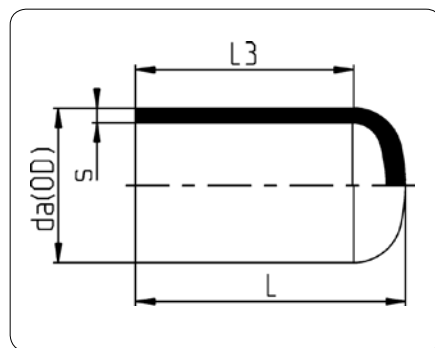
Long Spigot
Product 064

Unpigmented PVDF
Injection moulded
Butt (IR or Contact) fusion
or electro-fusion

Montures d'Embout

Broche Longue
Produit 064

PVDF Naturel
Moulé à injection
Bout fusion (IR ou Contact)
ou fusion électro-douille



da OD mm Nom.		SDR 21 / ISO S-10 / PN 16				
		L mm	L3 mm	s mm	Weight Poids kg	Item No.
20	1/2"	45	41	1.9	0.01	K.064.0020.21
25	3/4"	49	41	1.9	0.01	K.064.0025.21
32	1"	56	45	2.4	0.03	K.064.0032.21
40	1-1/4"	64	50	2.4	0.04	K.064.0040.21
50	1-1/2"	73	60	3.0	0.07	K.064.0050.21
63	2"	86	68	3.0	0.12	K.064.0063.21
75	2-1/2"	93	75	3.6	0.22	K.064.0075.21
90	3"	110	84	4.3	0.30	K.064.0090.21
110	4"	125	99	5.3	0.47	K.064.0110.21

End Caps

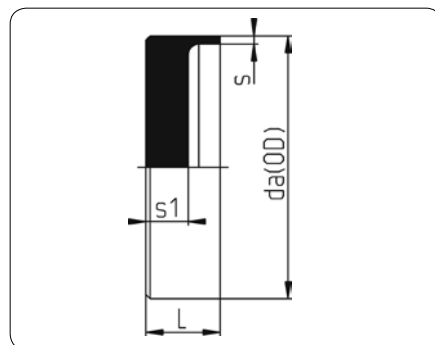
Short Spigot
Product 302

Unpigmented PVDF
Injection Moulded
Butt Fusion (IR or Contact)

Montures d'Embout

Broche Courte
Produit 302

PVDF Naturel
Moulé à injection
Bout fusion (IR ou Contact)



da OD		SDR 21 / ISO S-10 / PN 16				Item No.
		L	s1	s	Weight Poids kg	
mm	Nom.	mm	mm	mm		
125	4-1/2"	35	20	6.0	0.64	K.302.0125.21
160	6"	35	20	7.7	0.86	K.302.0160.21
200	8"	35	20	9.6	1.31	K.302.0200.21

PVDF Piping System

Female Threaded Adaptors – FNPT

Long Spigot
Product 032.1

Unpigmented PVDF
Injection moulded
Butt (IR or Contact) fusion
or electro-fusion

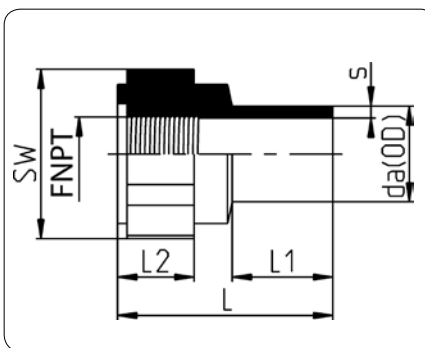
Adaptateurs Filetés Femelles – FNPT

Broche Longue
Produit 032.1

PVDF Naturel
Moulé à injection
Bout fusion (IR ou Contact)
ou fusion électro-douille



Butt Fusion SDR 21



da OD		SDR 21 / ISO S-10 / PN 16							
		FNPT	s	L	L1	L2	sw	Weight Poids kg	Item No.
mm	Nom.	mm	mm	mm	mm	mm	mm		
20	1/2"	1/2"	1.9	46	20	16	32	0.03	K.032.2021.21
25	3/4"	3/4"	1.9	51	23	18	41	0.05	K.032.2526.21
32	1"	1"	2.4	58	29	20	46	0.08	K.032.3233.21
40	1-1/4"	1-1/4"	2.4	62	30	24	55	0.13	K.032.4041.21
50	1-1/2"	1-1/2"	3.0	68	34	24	70	0.21	K.032.5051.21
63	2"	2"	3.0	75	35	28	85	0.33	K.032.6364.21

Male Threaded Adaptors – MNPT

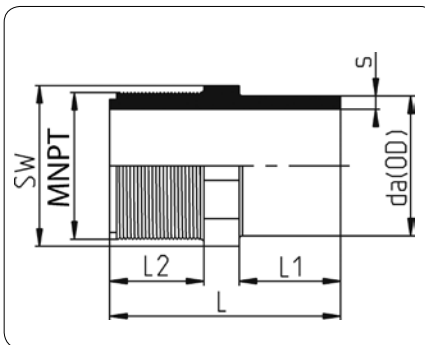
Long Spigot
Product 033.1

Unpigmented PVDF
Injection moulded
Butt (IR or Contact) fusion
or electro-fusion

Adaptateurs Filetés Males – MNPT

Broche Longue
Produit 033.1

PVDF Naturel
Moulé à injection
Bout fusion (IR ou Contact)
ou fusion électro-douille



da OD		SDR 21 / ISO S-10 / PN 16							
		MNPT	s	L	L1	L2	sw	Weight Poids kg	Item No.
mm	Nom.	mm	mm	mm	mm	mm	mm		
20	1/2"	1/2"	1.9	46	20	18	22	0.01	K.033.2021.21
25	3/4"	3/4"	1.9	51	23	20	27	0.02	K.033.2526.21
32	1"	1"	2.4	61	29	23	36	0.04	K.033.3233.21
40	1-1/4"	1-1/4"	2.4	66	29	27	46	0.07	K.033.4041.21
50	1-1/2"	1-1/2"	3.0	74	33	29	55	0.12	K.033.5051.21
63	2"	2"	3.0	80	35	31	65	0.13	K.033.6364.21

PVDF Piping System

Butt Fusion SDR 21

ANSI Stub Flanges

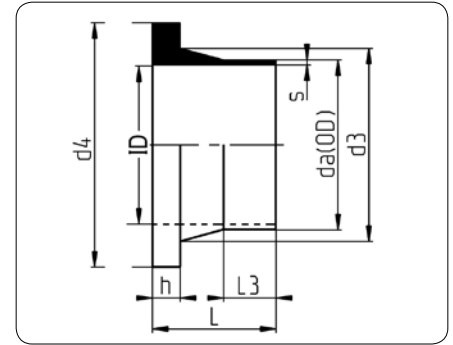
Short Spigot
Product 012.1

Unpigmented PVDF
Injection moulded
Butt (IR or Contact) fusion
or electro-fusion
Used together with Backing Rings
(page 12) for flange connections

Brides de Moignon ANSI

Broche Courte
Produit 012.1

PVDF Naturel
Moulé à injection
Bout fusion (IR ou Contact)
ou fusion électro-douille
Utilisé avec des anneaux de support (page 12)
pour des raccords de bride



da OD		SDR 21 / ISO S-10 / PN 16							Item No.
		d3	d4	L	s	h	L3	Weight Poids kg	
mm	Nom.	mm	mm	mm	mm	mm	mm		
20	1/2"	27	44.5	50	1.9	6.0	31	0.03	K.012.1020.21
25	3/4"	33	54.1	50	1.9	6.5	30	0.05	K.012.1025.21
32	1"	40	63.5	50	2.4	7.0	26	0.07	K.012.1032.21
40	1-1/4"	50	71.5	50	2.4	8.0	22	0.09	K.012.1040.21
50	1-1/2"	61	82.6	50	3.0	9.0	22	0.12	K.012.1050.21
63	2"	75	100.4	50	3.0	10.0	18	0.18	K.012.1063.21
75	2-1/2"	89	117.0	50	3.6	11.0	18	0.25	K.012.1075.21
90	3"	105	132.4	80	4.3	17.0	33	0.40	K.012.1090.21
110*	4"	125	158.0	80	5.3	12.0	32	0.68	K.012.0110.21
125*	4-1/2"	132	158.0	80	6.0	18.0	33	0.67	K.012.0125.21
160*	6"	175	212.0	80	7.7	18.0	34	1.23	K.012.0160.21
200*	8"	232	268.0	100	9.6	24.0	36	2.89	K.012.0200.21
250*	10"	285	320.0	100	11.9	25.0	35	3.72	K.012.0250.21

* Flange diameter d4 is slightly smaller than ANSI standard.

NOTE: When installing butterfly valves against stub flanges care must be taken that the disc will clear the stub inside diameter ("ID"). Sizes where this can be an issue are marked with a Dagger (†). To solve the problem, either the stub may be chamfered or a spacer plate installed. Consult Chemline.

* Diamètre de la bride d4 est légèrement moindre que ANSI standard.

NOTE: Quand l'installation des vannes papillon est contre des brides de moignon, prenez soin que le disque dégagera du diamètre intérieur du moignon. Les grandeurs où ceci peut être un problème sont identifiées par "dagger" (†). Pour résoudre le problème, soit que le moignon doit être chamfreiné où une entretoise installée. Consultez Chemline.

PVDF Piping System



Butt Fusion SDR 21

ANSI Blind Flanges

Product 334.1

Unpigmented PVDF

Machined

Solid plastic for low pressure

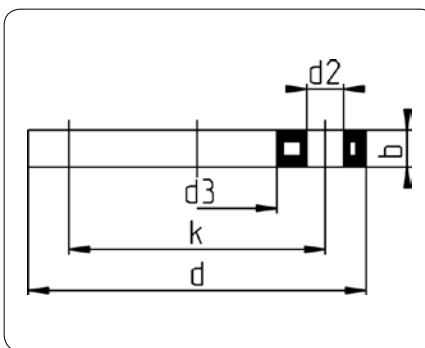
Brides Pleines ANSI

Produit 334.1

PVDF Naturel

Machinée

Plastiques plein pour applications



da OD mm	SDR 21 / ISO S-10 / PN 16							
	d mm	k mm	d2 mm	b mm	No. of Bolts	Bolt Size	Weight Poids kg	Item No.
20	95	60.5	16	12	4	1/2"	0.14	K.334.1020.00
25	102	69.9	16	12	4	1/2"	0.19	K.334.1025.00
32	114	79.3	16	16	4	1/2"	0.29	K.334.1032.00
40	130	88.9	16	16	4	1/2"	0.37	K.334.1040.00
50	133	95.6	16	18	4	1/2"	0.46	K.334.1050.00
63	162	120.7	20	18	4	5/8"	0.64	K.334.1063.00
75	181	139.7	20	18	4	5/8"	0.83	K.334.1075.00
90	194	152.4	20	18	4	5/8"	0.94	K.334.1090.00
110/125	229	190.5	20	18	8	5/8" / 3/4"	1.27	K.334.1110.00
160	283	241.3	22	24	8	3/4"	2.78	K.334.1160.00
200/225	345	298.5	22	24	8	3/4"	3.95	K.334.1200.00

Unions

Long Spigot

Product 024.5

Unpigmented PVDF

with Viton O-rings*

Injection moulded

Butt (IR or Contact) fusion

or electro-fusion

Unions

Broche Longue

Produit 024.5

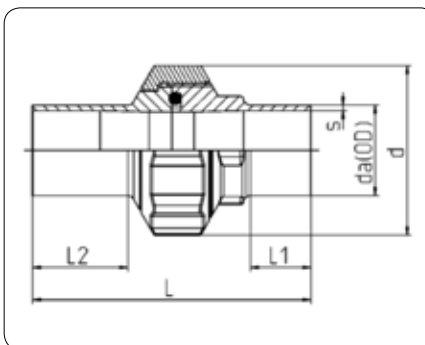
PVDF Naturel

avec bagues de Viton*

Moulé à injection

Bout fusion (IR ou Contact)

ou fusion électro-douille



da OD mm	Nom.	SDR 21 / ISO S-10 / PN16					Weight Poids kg	Item No.
		s mm	L mm	L1 mm	L2 mm	d mm		
20	1/2"	1.9	106	27	38	43	0.063	K.024.5020.21
25	3/4"	1.9	112	27	40	53	0.101	K.024.5025.21
32	1"	2.4	120	27	44	60	0.167	K.024.5032.21
40	1-1/4"	2.4	124	27	47	75	0.217	K.024.5040.21
50	1-1/2"	3.0	132	27	47	82	0.297	K.024.5050.21
63	2"	3.0	137	27	47	100	0.422	K.024.5063.21



PVDF Piping System

Butt Fusion SDR 21

Unions

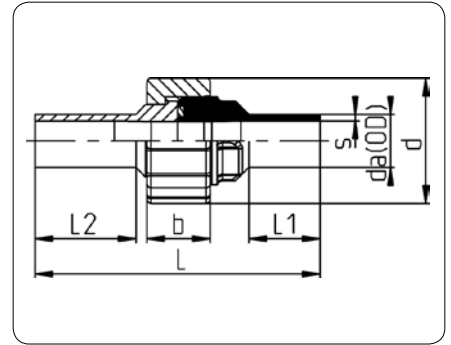
Long Spigot
Product 024

Unpigmented PVDF
with Viton O-rings*
Injection moulded
Butt (IR or Contact) fusion
or electro-fusion

Unions

Broche Longue
Produit 024

PVDF Naturel
avec bagues de Viton*
Moulé à injection
Bout fusion (IR ou Contact)
ou fusion électro-douille



da OD		SDR 21 / ISO S-10 / PN16						Weight Poids kg	Item No.
		s	L	L1	L2	d	b		
mm	Nom.	mm	mm	mm	mm	mm	mm		
75	2-1/2"	3.6	132	28	37.0	130.0	40	0.79	K.024.0075.21
90	3"	4.3	130	34	55.0	130.0	40	0.73	K.024.0090.21

* EPDM or PTFE covered O-rings also available.

* Les bagues d'EPDM ou couvertes de PTFE sont également disponibles.

Restraint Fittings

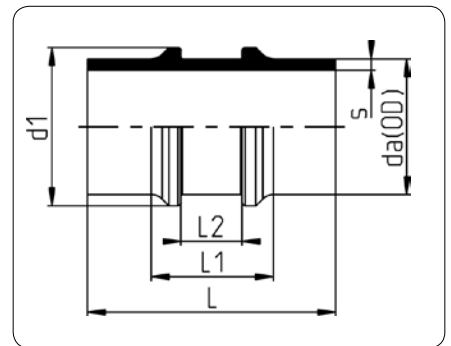
Long Spigot
Product 028

Unpigmented PVDF
Injection moulded
Butt (IR or Contact) fusion
or electro-fusion

Garnitures de Retenue

Broche Longue
Produit 028

PVDF Naturel
Moulé à injection
Bout fusion (IR ou Contact)
ou fusion électro-douille



da OD		SDR 21 / ISO S-10 / PN 16					Weight Poids kg	Item No.
		d1	L	L1	L2	s		
mm	Nom.	mm	mm	mm	mm	mm		
32	1"	40	120	53	32.5	2.4	0.07	K.028.0032.21
63	2"	71	120	50	32.5	3.0	0.17	K.028.0063.21
90	3"	105	149	70	40.0	4.3	0.42	K.028.0090.21
110	4"	127	150	70	40.0	5.3	0.63	K.028.0110.21
125	4-1/2"	143	160	100	60.0	6.0	0.84	K.028.0125.21
160	6"	178	158	100	60.0	7.7	1.34	K.028.0160.21

PVDF Piping System



Butt Fusion SDR 21

Instrumentation Fittings

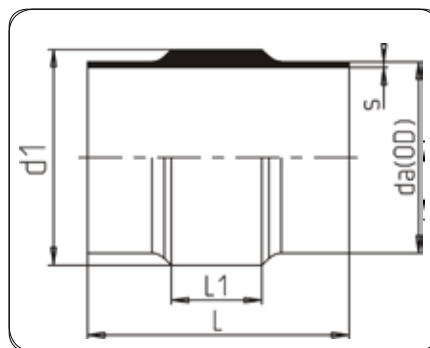
Product 303

Unpigmented PVDF
Injection Moulded
Contact or IR Butt Fusion

Raccord d'instrumentation

Produit 303

PVDF Naturel
Moulé à injection
Soudure Bout IR ou Contact



Size		Description	Dimensions			SDR 21 / ISO S-10 / PN 16		
			L	L1	d1	s	Weight Poids lbs.	Item No.
20	1/2"	Solid	4.724	1.969	1.969	0.075	0.684	K.303.1020.21
20	1/2"	1/4" Tap	4.724	1.969	1.969	0.075	0.684	K.303.2020.21
25	3/4"	Solid	4.724	1.969	2.165	0.075	0.573	K.303.1025.21
25	3/4"	1/4" Tap	4.724	1.969	2.165	0.075	0.573	K.303.2025.21
32	1"	Solid	4.724	1.969	2.362	0.094	0.595	K.303.1032.21
32	1"	1/4" Tap	4.724	1.969	2.362	0.094	0.595	K.303.2032.21
32	1"	1/2" Tap	4.724	1.969	2.362	0.094	0.595	K.303.3032.21
40	1-1/4"	Solid	4.724	1.969	2.953	0.094	0.882	K.303.1040.21
40	1-1/4"	1/4" Tap	4.724	1.969	2.953	0.094	0.882	K.303.2040.21
40	1-1/4"	1/2" Tap	4.724	1.969	2.953	0.094	0.882	K.303.3040.21
50	1-1/2"	Solid	4.724	1.969	3.150	0.118	0.904	K.303.1050.21
50	1-1/2"	1/4" Tap	4.724	1.969	3.150	0.118	0.904	K.303.2050.21
50	1-1/2"	1/2" Tap	4.724	1.969	3.150	0.118	0.904	K.303.3050.21
63	2"	Solid	4.724	2.047	3.307	0.118	0.860	K.303.1063.21
63	2"	1/4" Tap	4.724	2.047	3.307	0.118	0.860	K.303.2063.21
63	2"	1/2" Tap	4.724	2.047	3.307	0.118	0.860	K.303.3063.21

PVDF Piping System

Butt Fusion SDR 21

Probe Adaptors

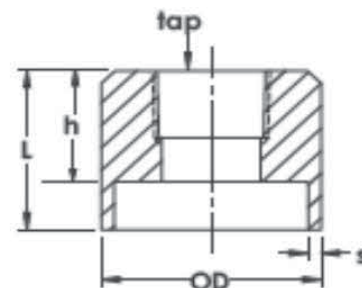
Product BA

Unpigmented PVDF
Injection Moulded
Contact or IR Butt Fusion

Adapteurs de Soude

Produit BA

PVDF Naturel
Moulé à injection
Soudure Bout IR ou Contact



da mm	OD Nom.	Description	SDR 21 / ISO S-10 / PN 16				Item No.
			h mm	L mm	s mm		
20	1/2"	Solid	25.4	38.1	2.5		K.PA.0020.21
20	1/2"	1/4" Tap	25.4	38.1	2.5		K.PA.1020.21
25	3/4"	Solid	25.4	38.1	2.7		K.PA.0025.21
25	3/4"	1/4" Tap	25.4	38.1	2.7		K.PA.1025.21
32	1"	Solid	25.4	38.1	2.9		K.PA.0032.21
32	1"	1/4" Tap	25.4	38.1	2.9		K.PA.1032.21
32	1"	1/2" Tap	25.4	38.1	2.9		K.PA.2032.21
40	1-1/4"	Solid	25.4	38.1	3.7		K.PA.0040.21
40	1-1/4"	1/4" Tap	25.4	38.1	3.7		K.PA.1040.21
40	1-1/4"	1/2" Tap	25.4	38.1	3.7		K.PA.2040.21
50	1-1/2"	Solid	25.4	38.1	4.6		K.PA.0050.21
50	1-1/2"	1/4" Tap	25.4	38.1	4.6		K.PA.1050.21
50	1-1/2"	1/2" Tap	25.4	38.1	4.6		K.PA.2050.21
50	1-1/2"	3/4" Tap	25.4	38.1	4.6		K.PA.3050.21
63	2"	Solid	25.4	38.1	5.8		K.PA.0063.21
63	2"	1/4" Tap	25.4	38.1	5.8		K.PA.1063.21
63	2"	1/2" Tap	25.4	38.1	5.8		K.PA.2063.21
63	2"	3/4" Tap	25.4	38.1	5.8		K.PA.3063.21
90	3"	Solid	25.4	38.1	4.3		K.PA.0090.21
90	3"	1/4" Tap	25.4	38.1	4.3		K.PA.1090.21
90	3"	1/2" Tap	25.4	38.1	4.3		K.PA.2090.21
90	3"	3/4" Tap	25.4	38.1	4.3		K.PA.3090.21
110	4"	Solid	25.4	38.1	5.3		K.PA.0110.21
110	4"	1/4" Tap	25.4	38.1	5.3		K.PA.1110.21
110	4"	1/2" Tap	25.4	38.1	5.3		K.PA.2110.21
110	4"	3/4" Tap	25.4	38.1	5.3		K.PA.3110.21

* Fabricated items, non-returnable, non-cancellable

* Articles manufacturés, non remboursables, non résiliables



Threaded Run Tee

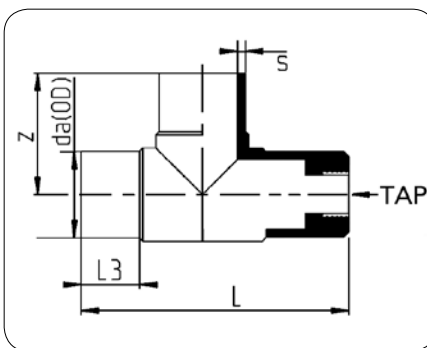
Produit TRT

Unpigmented PVDF
Injection moulded/Fabricated
Contact or IR Butt Fusion

Tés Filetés en Parcours

Produit TRT

PVDF Naturel
Moulé à injection/Fabrique
Soudure Bout IR ou Contact



da OD		Nom.	Description	SDR 21 / ISO S-10 / PN 16					Item No.
				L mm	z mm	L3 mm	s mm	Weight Poids kg	
20	1/2"		Solid	109	57	37	1.9	0.13	K.TRT.0020.21
20	1/2"		1/4" Tap	109	57	37	1.9	0.13	K.TRT.1020.21
25	3/4"		Solid	117	59	40	2.3	0.14	K.TRT.0025.21
25	3/4"		1/4" Tap	117	59	40	2.3	0.14	K.TRT.1025.21
32	1"		Solid	144	71	45	2.9	0.17	K.TRT.0032.21
32	1"		1/4" Tap	144	71	45	2.9	0.17	K.TRT.1032.21
32	1"		1/2" Tap	144	71	45	2.9	0.17	K.TRT.2032.21
40	1-1/4"		Solid	168	84	51	3.7	0.21	K.TRT.0040.21
40	1-1/4"		1/4" Tap	168	84	51	3.7	0.21	K.TRT.1040.21
40	1-1/4"		1/2" Tap	168	84	51	3.7	0.21	K.TRT.2040.21
50	1-1/2"		Solid	189	95	57	4.6	0.29	K.TRT.0050.21
50	1-1/2"		1/4" Tap	189	95	57	4.6	0.29	K.TRT.1050.21
50	1-1/2"		1/2" Tap	189	95	57	4.6	0.29	K.TRT.2050.21
50	1-1/2"		3/4" Tap	189	95	57	4.6	0.29	K.TRT.3050.21
63	2"		Solid	229	115	66	5.8	0.47	K.TRT.0063.21
63	2"		1/4" Tap	229	115	66	5.8	0.47	K.TRT.1063.21
63	2"		1/2" Tap	229	115	66	5.8	0.47	K.TRT.2063.21
63	2"		3/4" Tap	229	115	66	5.8	0.47	K.TRT.3063.21
90	3"		Solid	290	145	82	8.2	1.05	K.TRT.0090.21
90	3"		1/4" Tap	290	145	82	8.2	1.05	K.TRT.1090.21
90	3"		1/2" Tap	290	145	82	8.2	1.05	K.TRT.2090.21
90	3"		3/4" Tap	290	145	82	8.2	1.05	K.TRT.3090.21
110	4"		Solid	320	160	86	10.0	1.62	K.TRT.0110.21
110	4"		1/4" Tap	320	160	86	10.0	1.62	K.TRT.1110.21
110	4"		1/2" Tap	320	160	86	10.0	1.62	K.TRT.2110.21
110	4"		3/4" Tap	320	160	86	10.0	1.62	K.TRT.3110.21

* Fabricated items, non-returnable, non-cancellable

* Articles manufacturés, non remboursables, non résiliables



PVDF Piping System

 Butt Fusion SDR 21

Sanitary Run Tees

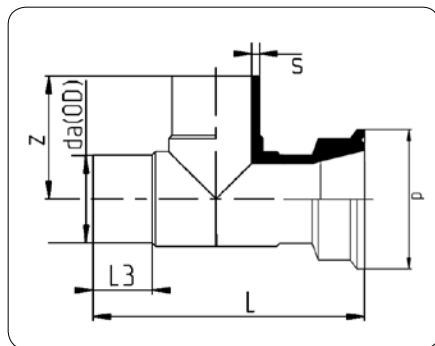
Long Spigot
Product SRT

Unpigmented PVDF
Injection moulded/Fabricated
Butt (IR or contact) fusion or
electro-fusion

Tés Sanitaires

Broche Longue
Produit SRT

PVDF Naturel
Moulé à injection/Fabriqué
Bout fusion (IR ou Contact)
ou fusion électro-douille



da OD		SDR 21 / ISO S-10 / PN 16						Weight Poids kg	Item No.
		L	z	L3	s	d			
mm	Nom.	mm	mm	mm	mm	mm			
20	1/2"	109	57	37	1.9	50.5	0.04		K.SRT.0020.21
25	3/4"	117	59	40	2.3	50.5	0.05		K.SRT.0025.21
32	1"	144	71	45	2.9	50.5	0.09		K.SRT.0032.21
40	1-1/4"	168	84	51	3.7	64.0	0.15		K.SRT.0040.21
50	1-1/2"	189	95	57	4.6	64.0	0.29		K.SRT.0050.21
63	2"	229	115	66	5.8	77.5	0.47		K.SRT.0063.21
75	2-1/2"	260	131	71	6.8	90.9	0.71		K.SRT.0075.21
90	3"	290	145	82	8.2	118.9	1.05		K.SRT.0090.21
110	4"	320	160	86	10.0	118.9	1.62		K.SRT.0110.21

* Fabricated items, non-returnable, non-cancellable

* Articles manufacturés, non remboursables, non résiliables

PVDF Piping System

HPF Electro-Fusion Couplings

Product 073

Unpigmented PVDF

Injection moulded

Electro-fusion is an alternative to butt welding for pipe and all butt fittings 20 to 63mm (1/2" to 2"). Electro-fusion couplings and the HPF machine are required. The machine supplies a controlled electric current which is fed through the copper coils inside the couplings. Long (33 ft.) electric cords allow the use of the HPF machine in areas inaccessible by fusion welders. A pressurized silicone plug inserted into the pipe and inside the joint allows the weld to form without internal bead or crevice. Consult Chemline for details on the HPF welding machine. It is available for rental or purchase.

Accouplements d'Emboîtement HPF

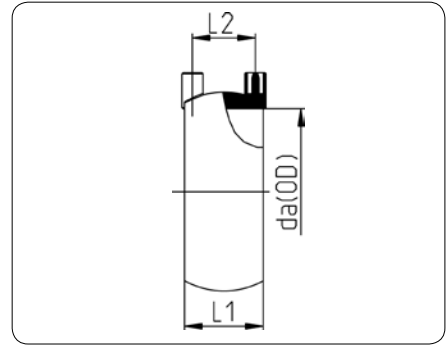
Produit 073

PVDF Naturel

Moulé à injection

L'électro-fusion est une alternative au soudage bout à bout pour la tuyauterie et toutes les garnitures bout à bout 20 à 63 millimètres (1/2" à 2"). Des accouplements d'électro-fusion et la machine HPF sont exigés. La machine fournit un courant électrique contrôlé qui alimente les enroulements de cuivre à l'intérieur des accouplements. Des longues cordes électriques (33 pi.) permettent l'utilisation de la machine HPF dans les secteurs inaccessibles par des soudeuses de fusion. Un bouchon pressurisé de silicone inséré dans la tuyauterie et à l'intérieur du joint permet à la soudure de former perle ou crevasse interne. Consultez Chemline pour des détails sur la machine de soudure HPF. Elle est disponible pour la location ou l'achat.

 Electro Fusion SDR 21

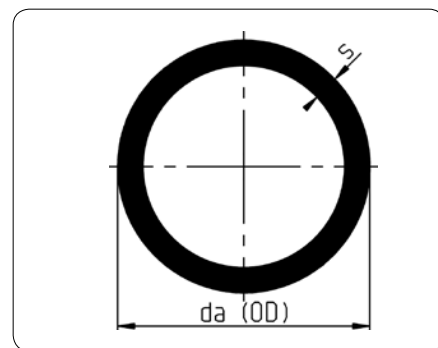


da OD		SDR 21 / ISO S-10 / PN16			
		L1	L2	Weight Poids kg	Item No.
mm	Nom.	mm	mm		
20	1/2"	20.0	15	0.02	K.073.0020.21
25	3/4"	20.0	15	0.02	K.073.0025.21
32	1"	20.5	15	0.03	K.073.0032.21
40	1-1/4"	25.0	20	0.04	K.073.0040.21
50	1-1/2"	30.0	24	0.06	K.073.0050.21
63	2"	30.0	24	0.07	K.073.0063.21

PVDF Piping System



Pipe SDR 33



Pipe

Product 705

Unpigmented PVDF
Extruded

Tuyau

Produit 705

PVDF Naturel
Expulsé

da		SDR 33 / ISO S-16 / PN 10		
mm	Nom.	s mm	Weight Poids kg/m	Item No.
63	2"	2.5	0.93	K.705.0063.33
75	2-1/2"	2.5	1.11	K.705.0075.33
90	3"	2.8	1.48	K.705.0090.33
110	4"	3.4	2.20	K.705.0110.33
125	4-1/2"	3.9	2.84	K.705.0125.33
160	6"	4.9	4.54	K.705.0160.33
200	8"	6.2	7.19	K.705.0200.33
250	10"	7.7	11.09	K.705.0250.33
315	12"	9.7	17.55	K.705.0315.33
355	14"	10.9	22.00	K.705.0355.33
400	16"	12.3	28.03	K.705.0400.33

* Weights are per meter, supplied in 5 meter (16.5 ft.) lengths.

* Poids au mètre, fourni en longueurs de 5 mètres (16.5 pieds).

PVDF Piping System



Butt Fusion SDR 33

90° Elbows

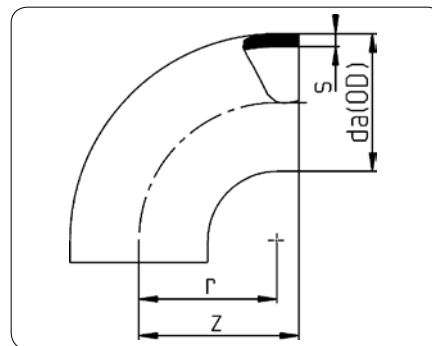
Short Spigot
Product 001

Unpigmented PVDF
Injection moulded
Butt (IR or contact) fusion
or electro-fusion

Coudes 90°

Broche Courte
Produit 001

PVDF Naturel
Moulé à injection
Bout fusion (IR ou Contact)
ou fusion électro-douille



da OD		SDR 33 / ISO S-16 / PN 10				
		r	z	s	Weight <i>Poids</i>	Item No.
mm	Nom.	mm	mm	mm	kg	
125	4-1/2"	125	135	3.9	0.65	K.001.0125.33
160	6"	157	181	4.9	1.48	K.001.0160.33
200	8"	196	217	6.2	2.76	K.001.0200.33
250	10"	250	287	7.7	5.73	K.001.0250.33
315	12"	315	338	9.7	10.10	K.001.0315.33

90° Elbows

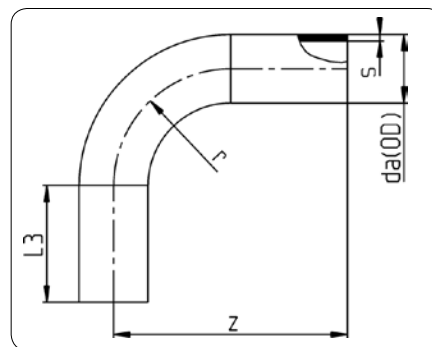
Long Spigot
Product 068

Unpigmented PVDF
Injection Moulded
Contact or IR Butt Fusion

Coudes 90°

Broche Longue
Produit 068

PVDF Naturel
Moulé à injection
Soudure Bout IR ou Contact



da OD		SDR 33 / ISO S-16 / PN 10					Item No.
		r	z	L3	s	Weight Poids kg	
mm	Nom.	mm	mm	mm	mm		
90	3"	90	123	34	2.8	0.40	K.068.0090.33
110	4"	110	142	34	3.4	0.71	K.068.0110.33
140	4-1/2"	140	216	73	4.3	1.39	K.068.0140.33
160	6"	160	236	73	4.9	1.97	K.068.0160.33

PVDF Piping System

Butt Fusion SDR 33

45° Elbows

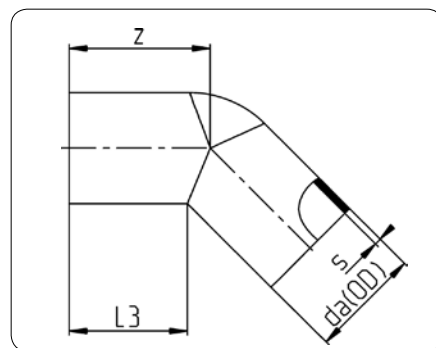
Long Spigot
Product 060

Unpigmented PVDF
Injection moulded
Butt (IR or contact) fusion
or electro-fusion

Coudes 45°

Broche Longue
Produit 060

PVDF Naturel
Moulé à injection
Bout fusion (IR ou Contact)
ou fusion électro-douille



da OD		SDR 33 / ISO S-16 / PN 10				
		L3	z	s	Weight <i>Poids</i> kg	Item No.
mm	Nom.	mm	mm	mm		
90	3"	36	59	2.8	0.17	K.060.0090.33
110	4"	45	68	3.4	0.32	K.060.0110.33
160	6"	65	103	4.9	0.99	K.060.0160.33

* Fabricated from moulded 90° bend (Product 001).

* Fabriqué d'un coude moulé 90° (Produit 001).

45° Elbows

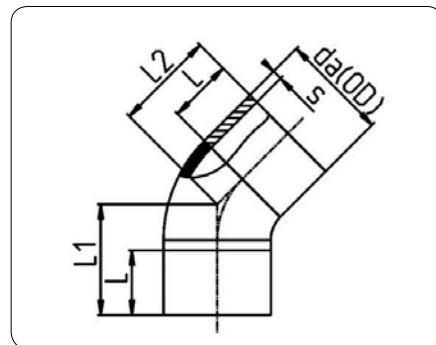
Long Spigot
Product 001.2

Unpigmented PVDF
Injection moulded
Butt (IR or contact) fusion
or electro-fusion

Coudes 45°

Broche Longue
Produit 001.2

PVDF Naturel
Moulé à injection
Bout fusion (IR ou Contact)
ou fusion électro-douille



da OD		SDR 33 / ISO S-16 / PN 10					Item No.
		L2	L	L1	s	Weight Poids kg	
mm	Nom.	mm	mm	mm	mm		
125	4-1/2"	152	100	162	3.9	0.89	K.001.2125.33
200	8"	181	100	202	6.2	2.82	K.001.2200.33
250	10"	204	100	241	7.7	4.94	K.001.2250.33
315	12"	224	100	262	6.0	8.48	K.001.2315.33

PVDF Piping System



Butt Fusion SDR 33

Tees

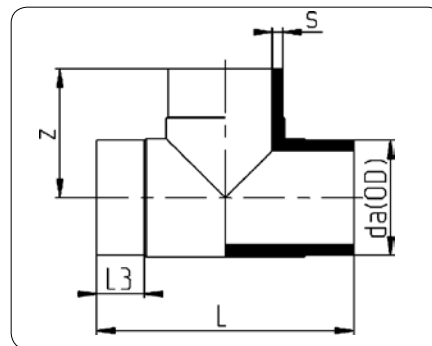
Short Spigot
Product 006

Unpigmented PVDF
Injection moulded
Butt (IR or Contact) fusion
or electro-fusion

Pièces en T

Broche Courte
Produit 006

PVDF Naturel
Moulé à injection
Bout fusion (IR ou Contact)
ou fusion électro-douille



da OD		SDR 33 / ISO S-16 / PN 10					Item No.
		L	z	L3	s	Weight Poids kg	
mm	Nom.	mm	mm	mm	mm		
90	3"	181	92	33	2.8	0.47	K.006.0090.33
110	4"	223	110	33	3.4	0.94	K.006.0110.33
125	4-1-2"	279	139	52	3.9	0.90	K.006.0125.33
160	6"	279	140	45	4.9	1.90	K.006.0160.33
200	8"	446	223	89	6.2	5.70	K.006.0200.33
250	10"	500	250	80	7.7	8.60	K.006.0250.33
315	12"	555	275	80	9.7	13.60	K.006.0315.33

Reducing Tees

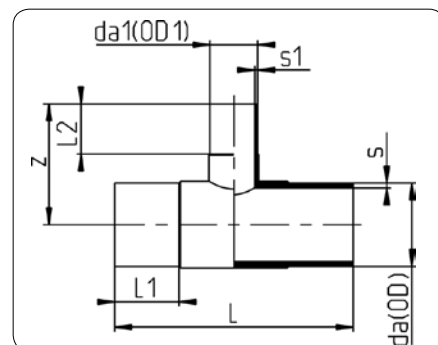
Long Spigot
Product 065

Unpigmented PVDF
Injection moulded
Butt (IR or contact) fusion
or electro-fusion

Pièces en T Réduites

Broche Longue
Produit 065

PVDF Naturel
Moulé à Injection
Bout fusion (IR ou Contact)
ou fusion électro-douille



da/da1 OD/OD1 mm	SDR 33 / ISO S-16 / PN 10						Weight Poids kg	Item No.
	L mm	L1 mm	L2 mm	z mm	s/s1 mm			
110/90	313	87	70	150	3.4/2.8		2.95	K.065.1190.33
160/90	348	97	70	183	4.9/2.8		1.98	K.065.1690.33
160/110	345	96	81	185	4.9/3.4		2.70	K.065.1611.33

Mixed Wall Thickness

Épaisseurs de Parois Combinées

da/da1 OD/OD1 mm	L mm	L1 mm	L2 mm	z mm	Run SDR33/ISO S-16/PN10 BRANCH SDR 21/ISO S-10/ PN16		
					s/s1 mm	Weight Poids kg	Item No.
90/63	263	75	65	129	2.8/3.0	0.58	K.065.9063.31
110/63	315	85	65	150	3.4/3.0	0.92	K.065.1163.31
160/63	345	100	65	175	4.9/3.0	1.92	K.065.1663.31
160/90	348	97	70	183	4.9/4.3	2.52	K.065.1690.31
160/110	347	96	81	185	4.9/5.3	2.14	K.065.1611.31

* Mixed wall thickness tees have branch according to SDR 21/ISO S-10/PN 10 and runs according to SDR 33/ISO S-16/PN10.

* Les pièces en té d'épaisseurs de parois combinées ont la branche selon le SDR 21/ISO S-10/PN10 et les courses selon SDR 33/ISO S-16/PN16.

PVDF Piping System



Butt Fusion SDR 33

Concentric Reducers

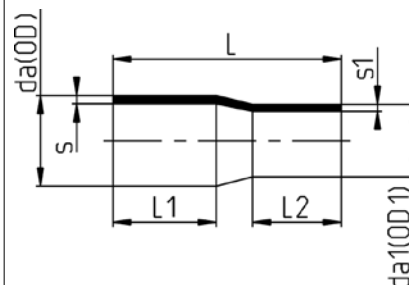
Long Spigot
Product 067

Unpigmented PVDF
Injection moulded
Butt (IR or contact) fusion
or electro-fusion

Réducteur Concentrique

Broche Longue
Produit 067

PVDF Naturel
Moulé à Injection
Bout fusion (IR ou Contact)
ou fusion électro-douille



da/da1 OD/OD1 mm.	SDR 33 / ISO S-16 / PN 10					Item No.
	L1 mm	L2 mm	L mm	s mm	Weight Poids kg	
110/90	79	72	180	3.4/2.7	0.49	K.067.1190.33
140/110	42	40	110	4.3/3.4	0.39	K.067.1411.33
160/110	95	89	222	4.9/3.4	1.40	K.067.1611.33
250/160	36	36	179	7.7/4.9	1.60	K.067.2516.33
315/160	42	37	180	9.7/4.9	5.00	K.067.3116.33

Concentric Reducers

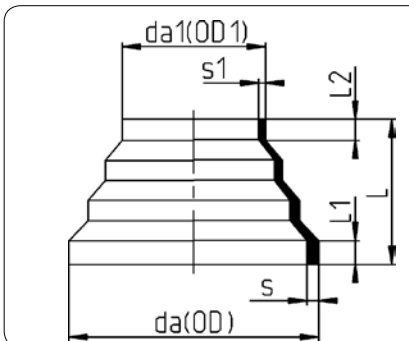
Short Spigot
Product 007

Unpigmented PVDF
Injection moulded
Butt (IR or contact) fusion
or electro-fusion

Réducteur Concentriques

Broche Courte
Produit 007

PVDF Naturel
Moulé à injection
Bout fusion (IR ou Contact)
ou fusion électro-douille



da/da1 OD/OD1 mm	SDR 33 / ISO S-16 / PN 10					Weight Poids kg	Item No.
	L mm	L1 mm	L2 mm	s mm	s1 mm		
110/63	65	11	7	3.4	3.0	0.18	K.007.1163.33
160/110	85	14	13	4.9	3.4	0.33	K.007.1611.33

PVDF Piping System

Butt Fusion SDR 33

End Caps

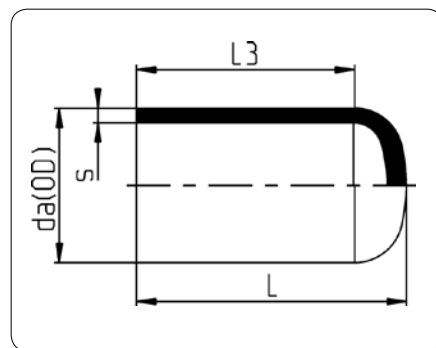
Long Spigot
Product 064

Unpigmented PVDF
Injection moulded
Butt (IR or Contact) fusion
or electro-fusion

Montures d'Embout

Broche Longue
Produit 064

PVDF Naturel
Moulé à injection
Bout fusion (IR ou Contact)
ou fusion électro-douille



da OD		SDR 33 / ISO S-16 / PN 10				
		L	L3	s	Weight Poids kg	Item No.
mm	Nom.	mm	mm	mm		
90	3"	110	84	2.8	0.19	K.064.0090.33
110	4"	125	99	3.4	0.29	K.064.0110.33

End Caps

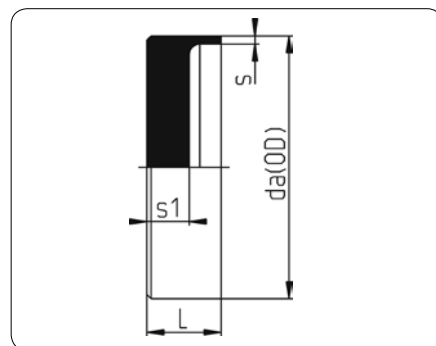
Short Spigot
Product 302

Unpigmented PVDF
Injection Moulded
Butt Fusion (IR or Contact)

Montures d'Embout

Broche Courte
Produit 302

PVDF Naturel
Moulé à injection
Bout fusion (IR ou Contact)



da OD		SDR 33 / ISO S-16 / PN 10				
		L	s1	s	Weight Poids kg	Item No.
mm	Nom.	mm	mm	mm		
125	4-1/2"	35	20	3.9	0.51	K.302.0125.33
160	6"	35	20	4.9	2.20	K.302.0160.33
200	8"	35	20	6.2	1.27	K.302.0200.33

PVDF Piping System

ANSI Stub Flanges

Short Spigot
Product 012.1

Unpigmented PVDF
Injection moulded
Butt (IR or Contact) fusion
or electro-fusion
Used together with Backing Rings
(page 12) for flange connections

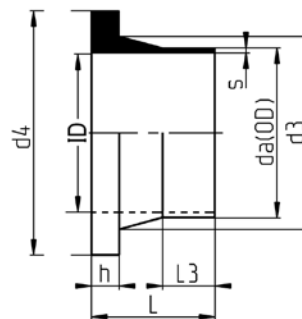
Brides de Moignon ANSI

Broche Courte
Produit 012.1

PVDF Naturel
Moulé à injection
Bout fusion (IR ou Contact)
ou fusion électro-douille
Utilisé avec des anneaux de support (page 12)
pour des raccords de bride



Butt Fusion SDR 33



da OD		SDR 33 / ISO S-16 / PN10							
		d3	d4	L	s	h	L3	Weight Poids kg	Item No.
mm	Nom.	mm	mm	mm	mm	mm	mm		
90	3"	105	132.4	80	2.8	17.0	33	0.34	K.012.1090.33
110*	4"	125	158.0	80	3.4	12.0	32	0.48	K.012.0110.33
125*	4-1/2"	132	158.0	80	3.9	18.0	33	0.52	K.012.0125.33
160*	6"	175	212.0	80	4.9	18.0	34	0.94	K.012.0160.33
200*	8"	232	268.0	100	6.2	18.0	42	1.87	K.012.0200.33
250*	10"	285	320.0	100	7.7	20.0	40	3.10	K.012.0250.33
315*	12"	335	370.0	100	9.7	20.0	40	3.47	K.012.0315.33

Restraint Fittings

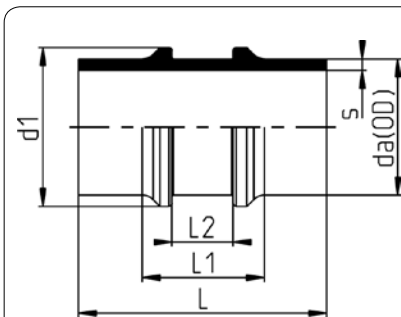
Long Spigot
Product 028

Unpigmented PVDF
Injection moulded
Butt (IR or Contact) fusion
or electro-fusion

Garnitures de Retenue

Broche Longue
Produit 028

PVDF Naturel
Moulé à injection
Bout fusion (IR ou Contact)
ou fusion électro-douille



da OD		SDR 33 / ISO S-16 / PN 10						
		d1	L	L1	L2	s	Weight Poids	Item No.
mm	Nom.	mm	mm	mm	mm	mm	kg	
90	3"	105	149	70	40.0	2.8	0.33	K.028.0090.33
110	4"	127	150	70	40.0	3.4	0.47	K.028.0110.33
125	4-1/2"	143	160	100	60.0	3.9	0.62	K.028.0125.33
160	6"	178	158	100	60.0	4.9	1.39	K.028.0160.33

PVDF Piping System

 **Butt Fusion SDR 33**

Laterals

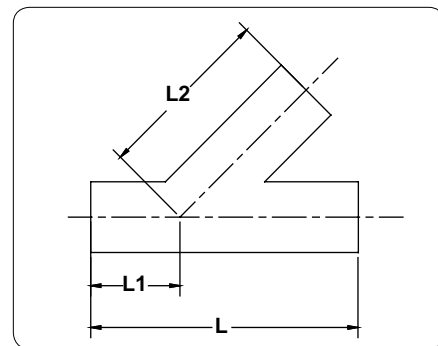
Product Y

Unpigmented PVDF
Fabricated

Latérales

Produit Y

PVDF Naturel
Fabriqué



da OD		SDR 33 / ISO S-16 / PN 10				Item No.
		L1	L2	L		
mm	Nom.	mm	mm	mm		
50	1-1/2"	152	305	457		K.Y.0050.33
63	2"	152	305	457		K.Y.0063.33
90	3"	152	305	457		K.Y.0090.33
110	4"	152	305	457		K.Y.0110.33
160	6"	203	406	610		K.Y.0160.33
200	8"	254	508	762		K.Y.0200.33
250	10"	305	610	914		K.Y.0250.33
315	12"	356	711	1,067		K.Y.0315.33

Laterals with 1/8 Bend

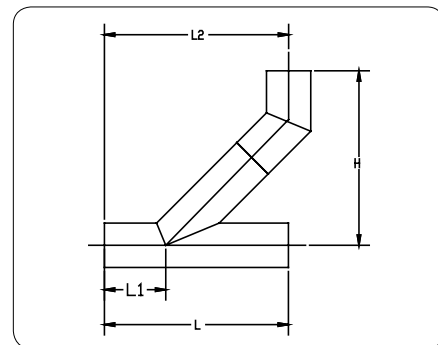
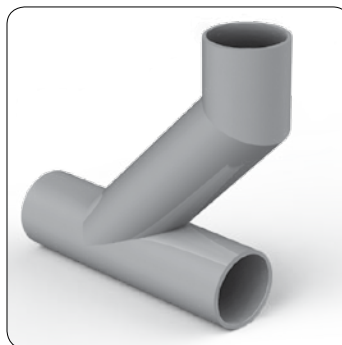
Product YB

Unpigmented PVDF
Fabricated

Latérales avec coude 1/8

Produit YB

PVDF Naturel
Fabriqué



da OD		SDR 33 / ISO S-16 / PN 10				Item No.
		L	L1	L2	H	
mm	Nom.	mm	mm	mm	mm	
50	1-1/2"	457	152	413	330	K.YB.0050.33
63	2"	457	152	419	337	K.YB.0063.33
90	3"	457	152	438	387	K.YB.0090.33
110	4"	457	152	438	394	K.YB.0110.33
160	6"	610	203	597	552	K.YB.0160.33
200	8"	762	254	724	648	K.YB.0200.33
250	10"	914	305	883	794	K.YB.0250.33
315	12"	1,067	356	997	845	K.YB.0315.33

PVDF Piping System



Butt Fusion SDR 33

P-Traps

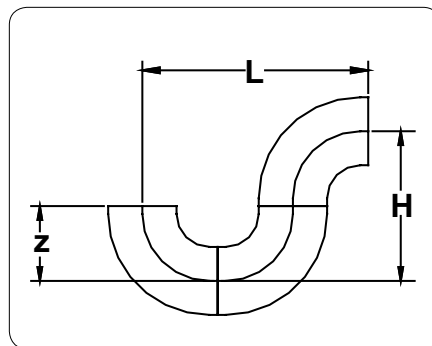
Product PT

Unpigmented PVDF
Fabricated

Pièges-P

Produit PT

PVDF Naturel
Fabriqué



		SDR 33 / ISO S-16 / PN 10			
da	OD	L	Z	H	Item No.
mm	Nom.	mm	mm	mm	
50	1-1/2"	222	108	206	K.PT.0050.33
63	2"	273	127	248	K.PT.0063.33
90	3"	368	165	327	K.PT.0090.33
110	4"	435	187	368	K.PT.0110.33
160	6"	610	254	502	K.PT.0160.33
200	8"	730	311	616	K.PT.0200.33

Cleanouts with Plug

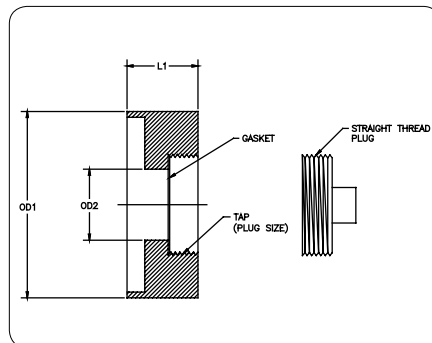
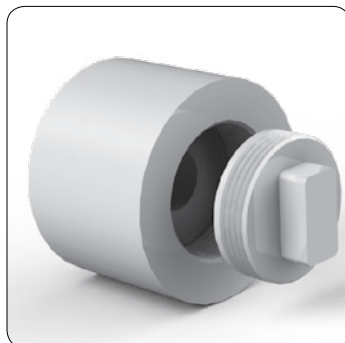
Product CO

Unpigmented PVDF
Fabricated

Ramonages avec bouchon

Produit CO

PVDF Naturel
Fabriqué



da OD		SDR 33 / ISO S-16 / PN 10				
		OD1	OD2	L1	Tap Depth	Item No.
mm	Nom.	mm	mm	mm	mm	
50	1-1/2"	50	76	6	13	K.CO.0050.33
63	2"	63	76	13	19	K.CO.0063.33
90	3"	90	76	25	24	K.CO.0090.33
110	4"	110	76	76	28	K.CO.0110.33
160	6"	160	76	76	32	K.CO.0160.33

PVDF Piping System

 **Butt Fusion SDR 33**

Reducing Laterals

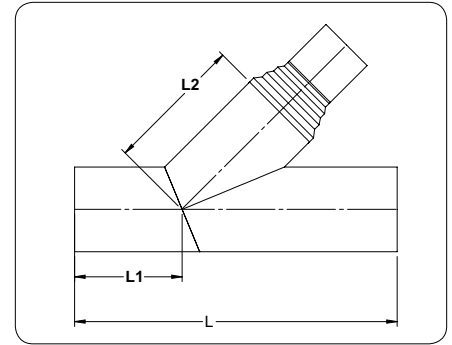
Product YR

Unpigmented PVDF
Fabricated

Latérales à réduit

Produit YR

PVDF Naturel
Fabriqué



da OD mm		SDR 33 / ISO S-16 / PN 10						Item No.
Nom.	L mm	L1 mm	L2 mm	L3 mm				
90x63	3"x2"	457	152	457	305			K.YR.9063.33
110x63	4"x2"	457	152	457	305			K.YR.1163.33
110x90	4"x3"	457	152	457	305			K.YR.1190.33
160x63	6"x2"	610	203	610	406			K.YR.1663.33
160x90	6"x3"	610	203	610	406			K.YR.1690.33
160x110	6"x4"	610	203	610	406			K.YR.1611.33
200x63	8"x2"	762	254	762	508			K.YR.2063.33
200x90	8"x3"	762	254	762	508			K.YR.2090.33
200x110	8"x4"	762	254	762	508			K.YR.2011.33
200x160	8"x6"	762	254	762	508			K.YR.2016.33
250x63	10"x2"	914	305	914	610			K.YR.2563.33
250x90	10"x3"	914	305	914	610			K.YR.2590.33
250x110	10"x4"	914	305	914	610			K.YR.2511.33
250x160	10"x6"	914	305	914	610			K.YR.2516.33
250x200	10"x8"	914	305	914	610			K.YR.2521.33
315x160	12"x6"	1,067	356	1,067	711			K.YR.3116.33
315x200	12"x8"	1,067	356	1,067	711			K.YR.3120.33

PVDF Piping System

Reducing Lateral with 1/8 Bend

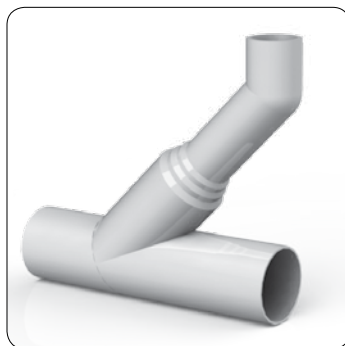
Product YRB

Unpigmented PVDF
Fabricated

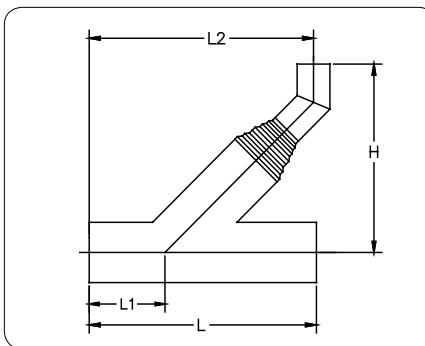
Latérales à réduit avec coude 1/8

Produit YRB

PVDF Naturel
Fabriqué



Butt Fusion SDR 33



da OD		SDR 33 / ISO S-16 / PN 10					Item No.
		L	L1	L2	H		
mm	Nom.	mm	mm	mm	mm		
90x63	3"x2"	457	152	406	419		K.YRB.9063.33
110x63	4"x2"	457	152	432	445		K.YRB.1163.33
110x90	4"x3"	457	152	432	483		K.YRB.1190.33
160x63	6"x2"	610	203	406	470		K.YRB.1663.33
160x90	6"x3"	610	203	559	572		K.YRB.1690.33
160x110	6"x4"	610	203	559	584		K.YRB.1611.33
200x63	8"x2"	762	254	508	591		K.YRB.2063.33
200x90	8"x3"	762	254	508	604		K.YRB.2090.33
200x110	8"x4"	762	254	686	597		K.YRB.2011.33
200x160	8"x6"	762	254	686	749		K.YRB.2016.33
250x63	10"x2"	914	305	610	692		K.YRB.2563.33
250x90	10"x3"	914	305	610	699		K.YRB.2590.33
250x110	10"x4"	914	305	838	724		K.YRB.2511.33
250x160	10"x6"	914	305	762	749		K.YRB.2516.33
250x200	10"x8"	914	305	711	737		K.YRB.2521.33
315x160	12"x6"	1,067	356	940	876		K.YRB.3116.33
315x200	12"x8"	1,067	356	889	864		K.YRB.3120.33

PVDF Piping System

 **Butt Fusion SDR 33**

Reducing Sanitary Tees

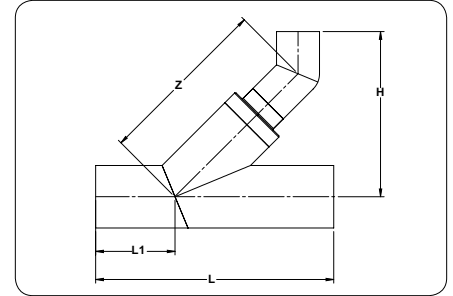
Product RST

Unpigmented PVDF
Fabricated

Tés sanitaires à réduit

Produit RST

PVDF Naturel
Fabriqué



		SDR 33 / ISO S-16 / PN 10				
da	OD	L	L1	Z	H	Item No.
mm	Nom.	mm	mm	mm	mm	
90x63	3"x2"	457	152	267	270	K.RST.9063.33
110x63	4"x2"	457	152	267	270	K.RST.1163.33
110x90	4"x3"	457	152	267	292	K.RST.1190.33
160x63	6"x2"	610	203	381	349	K.RST.1663.33
160x90	6"x3"	610	203	381	375	K.RST.1690.33
160x110	6"x4"	610	203	381	378	K.RST.1611.33
200x63	8"x2"	762	254	432	384	K.RST.2063.33
200x90	8"x3"	762	254	432	410	K.RST.2090.33
200x110	8"x4"	762	254	432	432	K.RST.2011.33
200x160	8"x6"	762	254	432	514	K.RST.2016.33
250x63	10"x2"	914	305	508	438	K.RST.2563.33
250x90	10"x3"	914	305	508	464	K.RST.2590.33
250x110	10"x4"	914	305	533	486	K.RST.2511.33
250x160	10"x6"	914	305	533	533	K.RST.2516.33
250x200	10"x8"	914	305	610	600	K.RST.2521.33
315x160	12"x6"	1,067	356	711	660	K.RST.3116.33
315x200	12"x8"	1,067	356	737	692	K.RST.3120.33

Sanitary Tees

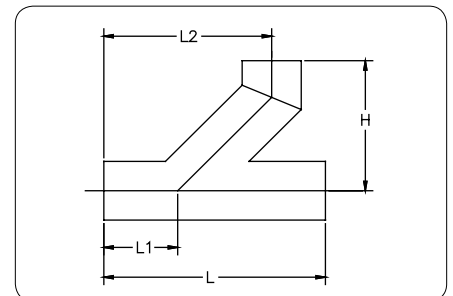
Product ST

Unpigmented PVDF
Fabricated

Tés sanitaires

Produit RST

PVDF Naturel
Fabriqué

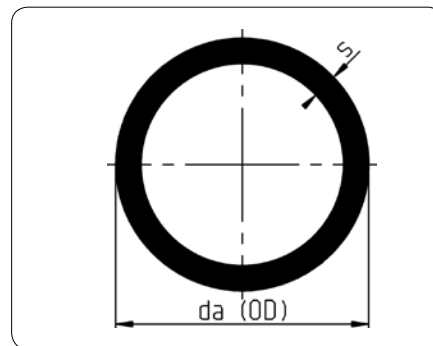


		SDR 33 / ISO S-16 / PN 10				
da	OD	L	L1	L2	H	Item No.
mm	Nom.	mm	mm	mm	mm	
63	2"	457	152	305	229	K.ST.0063.33
90	3"	457	152	305	229	K.ST.0090.33
110	4"	457	152	305	229	K.ST.0110.33
160	6"	610	203	406	318	K.ST.0160.33
200	8"	762	254	508	394	K.ST.0200.33
250	10"	914	305	610	470	K.ST.0250.33
315	12"	1,067	356	711	552	K.ST.0315.33

PVDF Piping System



Pipe SDR 21



Pipe

Product 705

Unpigmented PVDF
Extruded

Tuyau

Produit 705

PVDF Naturel
Expulsé

SDR 21 / ISO S-10/ PN 16				
da OD		s	Weight Poids	Item No.
mm	Nom.	mm	kg/m	
20	1/2"	1.9	0.21	K.705.0020.21
25	3/4"	1.9	0.27	K.705.0025.21
32	1"	2.4	0.44	K.705.0032.21
40	1-1/4"	2.4	0.55	K.705.0040.21
50	1-1/2"	3.0	0.85	K.705.0050.21
63	2"	3.0	1.09	K.705.0063.21
75	2-1/2"	3.6	1.55	K.705.0075.21
90	3"	4.3	2.22	K.705.0090.21
110	4"	5.3	3.32	K.705.0110.21

* Weights are per meter, supplied in 5 meter (16.5 ft.) lengths.

* Poids au mètre, fourni en longueurs de 5 mètres (16.5 pieds).

Socket fittings socket are SDR7.4 but when installed with SDR21 piping are rated to only SDR21. Mechanical socket fittings (flanges, unions) are automatically rated to PN10 pressures.

Fittings socket ont un indice de SDR7.4, mais deviennent SDR21 quand installés avec la tuyauterie SDR21. Fittings socket mécaniques (brides, unions) ont automatiquement un indice de SDR21.

PVDF Piping System



Socket Couplings

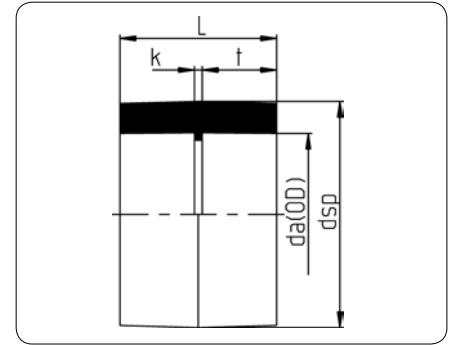
Product 053

Unpigmented PVDF
Injection Moulded
Socket Welding

Accouplements de Douille

Produit 053

PVDF Naturel
Moulé à injection
Soudure à Douille



da OD		SDR 7.4 / ISO 3.2 / PN 20					
		dsp	k	t	L	Weight Poids kg	Item No.
mm	Nom.	mm	mm	mm	mm		
20	1/2"	29	4	15.5	35	0.03	K.053.0020.07
25	3/4"	35	4	17.5	39	0.03	K.053.0025.07
32	1"	43	4	19.5	43	0.05	K.053.0032.07
40	1-1/4"	52	5	21.0	47	0.07	K.053.0040.07
50	1-1/2"	64	6	23.5	52	0.13	K.053.0050.07
63	2"	81	4	28.0	60	0.23	K.053.0063.07
75	2-1/2"	92	5	32.5	70	0.29	K.053.0075.07
90	3"	113	5	36.5	78	0.58	K.053.0090.07
110	4"	133	5	42.5	90	0.76	K.053.0110.07

90° Elbows

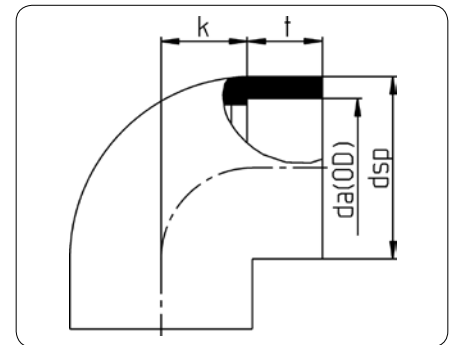
Product 051

Unpigmented PVDF
Injection Moulded
Socket Welding

Coudes 90°

Produit 051

PVDF Naturel
Moulé à Injection
Soudure à Douille



da OD		SDR 7.4 / ISO 3.2 / PN 20				Weight Poids kg	Item No.
		dsp	k	t			
mm	Nom.	mm	mm	mm			
20	1/2"	29	15	16.0		0.04	K.051.0020.07
25	3/4"	35	15	18.0		0.06	K.051.0025.07
32	1"	43	21	19.5		0.10	K.051.0032.07
40	1-1/4"	52	25	21.5		0.16	K.051.0040.07
50	1-1/2"	64	30	24.5		0.27	K.051.0050.07
63	2"	81	35	28.0		0.48	K.051.0063.07
75	2-1/2"	92	39	32.5		0.59	K.051.0075.07
90	3"	113	44	35.5		1.07	K.051.0090.07
110	4"	133	53	41.5		1.55	K.051.0110.07

Socket fittings socket are SDR7.4 but when installed with SDR21 piping are rated to only SDR21. Mechanical socket fittings (flanges, unions) are automatically rated to PN10 pressures.

Fittings socket ont un indice de SDR7.4, mais deviennent SDR21 quand installés avec la tuyauterie SDR21. Fittings socket mécaniques (brides, unions) ont automatiquement un indice de SDR21.

PVDF Piping System

 Socket Fusion SDR 7.4

45° Elbows

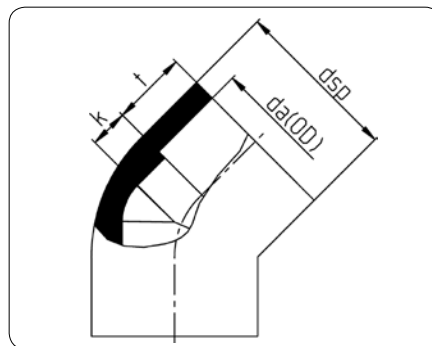
Product 050

Unpigmented PVDF
Injection Moulded
Socket Welding

Coudes 45°

Produit 050

PVDF Naturel
Moulé à injection
Soudure à Douille



da OD		SDR 7.4 / ISO 3.2 / PN 20				
		dsp	k	t	Weight Poids kg	Item No.
mm	Nom.	mm	mm	mm		
20	1/2"	30	5	16.0	0.04	K.050.0020.07
25	3/4"	35	6	18.0	0.05	K.050.0025.07
32	1"	43	7	19.0	0.08	K.050.0032.07
40	1-1/4"	52	9	21.5	0.13	K.050.0040.07
50	1-1/2"	64	11	24.0	0.21	K.050.0050.07
63	2"	81	16	29.0	0.36	K.050.0063.07
75	2½"	92	16	32.0	0.42	K.050.0075.07
90	3"	113	19	36.5	0.82	K.050.0090.07
110	4"	133	27	41.5	1.23	K.050.0110.07

Tees

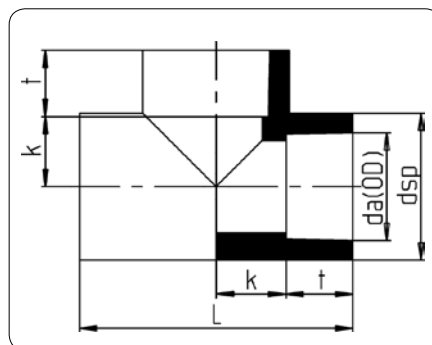
Product 056

Unpigmented PVDF
Injection Moulded
Socket Welding

Pièces en T

Produit 056

PVDF Naturel
Moulé à injection
Soudure à Douille

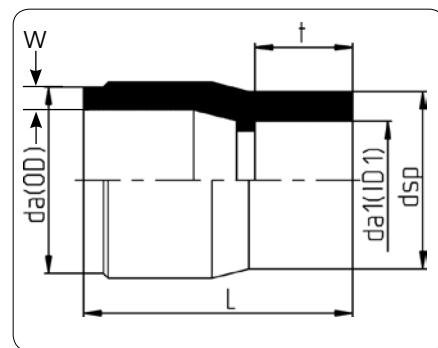


da OD		SDR 7.4 / ISO 3.2 / PN 20					Item No.
		dsp	k	t	L	Weight Poids kg	
mm	Nom.	mm	mm	mm	mm		
20	1/2"	29	14.5	16.0	60	0.06	K.056.0020.07
25	3/4"	35	16.5	17.5	68	0.07	K.056.0025.07
32	1"	43	20.5	19.5	80	0.13	K.056.0032.07
40	1-1/4"	52	25.5	21.5	94	0.20	K.056.0040.07
50	1-1/2"	64	30.0	23.5	108	0.33	K.056.0050.07
63	2"	81	35.5	29.0	125	0.59	K.056.0063.07
75	2-1/2"	92	42.0	34.5	153	0.75	K.056.0075.07
90	3"	113	53.5	38.0	183	1.49	K.056.0090.07
110	4"	133	61.5	42.5	208	1.98	K.056.0110.07

Socket fittings socket are SDR7.4 but when installed with SDR21 piping are rated to only SDR21. Mechanical socket fittings (flanges, unions) are automatically rated to PN10 pressures.

Fittings socket ont un indice de SDR7.4, mais deviennent SDR21 quand installes avec la tuyauterie SDR21. Fittings socket mechaniques (brides, unions) ont automatiquement un indice de SDR21.

PVDF Piping System



Concentric Reducers

Product 057

Unpigmented PVDF
Injection Moulded
Butt by Socket Welding

Réducteurs Concentriques

Produit 057

PVDF Naturel
Moulé à injection
Soudure bout fusion par soudure à douille

da OD mm	SDR 7.4 / ISO 3.2 / PN 20						Item No.
	dsp mm	L mm	t mm	W mm	Weight Poids kg		
25/16	24	40	15.0	1.9	0.02		K.057.2516.07
25/20	29	40	15.7	1.9	0.02		K.057.2520.07
32/20	29	44	15.5	2.4	0.03		K.057.3220.07
32/25	35	44	17.6	2.4	0.04		K.057.3225.07
40/20	29	49	16.3	2.4	0.03		K.057.4020.07
40/25	35	49	17.6	2.4	0.05		K.057.4025.07
40/32	43	49	20.2	2.4	0.04		K.057.4032.07
50/20	29	55	16.2	3.0	0.06		K.057.5020.07
50/25	35	55	18.0	3.0	0.07		K.057.5025.07
50/32	43	55	17.0	3.0	0.08		K.057.5032.07
50/40	52	55	25.0	3.0	0.09		K.057.5040.07
63/25	35	64	18.4	3.6	0.11		K.057.6325.07
63/32	43	64	20.3	3.6	0.12		K.057.6332.07
63/40	52	64	21.4	3.6	0.13		K.057.6340.07
63/50	64	64	24.6	3.6	0.15		K.057.6350.07
75/63	81	64	28.6	4.3	0.21		K.057.7563.07
90/63	81	87	29.0	5.1	0.36		K.057.9063.07
90/75	92	87	33.0	5.1	0.36		K.057.9075.07
110/63	81	88	29.3	6.3	0.48		K.057.1163.07
110/90	113	87	35.5	6.3	0.58		K.057.1190.07

Socket fittings socket are SDR7.4 but when installed with SDR21 piping are rated to only SDR21. Mechanical socket fittings (flanges, unions) are automatically rated to PN10 pressures.

Fittings socket ont un indice de SDR7.4, mais deviennent SDR21 quand installes avec la tuyauterie SDR21. Fittings socket mechaniques (brides, unions) ont automatiquement un indice de SDR21.

PVDF Piping System

 Socket Fusion SDR 7.4

End Caps

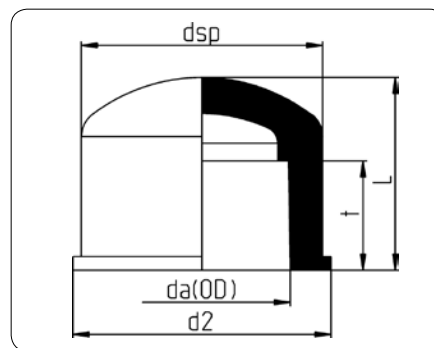
Product 054

Unpigmented PVDF
Injection Moulded
Socket Welding

Montures d'Embout

Produit 054

PVDF Naturel
Moulé à injection
Soudure à Douille



da OD		SDR 7.4 / ISO 3.2 / PN 20					
		dsp	d2	t	L	Weight Poids kg/m	Item No.
mm	Nom.	mm	mm	mm	mm		
20	1/2"	29	32	15.5	27	0.02	K.054.0020.07
25	3/4"	35	37	17.5	30	0.03	K.054.0025.07
32	1"	43	46	19.5	35	0.04	K.054.0032.07
40	1-1/4"	52	57	22.5	39	0.07	K.054.0040.07
50	1-1/2"	64	69	24.0	49	0.13	K.054.0050.07
63	2"	81	86	28.0	59	0.20	K.054.0063.07
75	2-1/2"	92	97	33.5	66	0.30	K.054.0075.07
90	3"	113	119	36.5	77	0.53	K.054.0090.07
110	4"	133	139	42.5	92	0.81	K.054.0110.07

Socket fittings socket are SDR7.4 but when installed with SDR21 piping are rated to only SDR21. Mechanical socket fittings (flanges, unions) are automatically rated to PN10 pressures.

Fittings socket ont un indice de SDR7.4, mais deviennent SDR21 quand installes avec la tuyauterie SDR21. Fittings socket mechaniques (brides, unions) ont automatiquement un indice de SDR21.

PVDF Piping System



Female Threaded Adaptors – FNPT

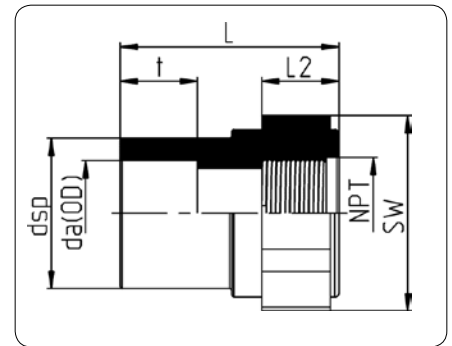
Product 034.1

Unpigmented PVDF
Injection moulded
Socket Welding

Adapteurs Filetés Femelles – FNPT

Produit 034.1

PVDF Naturel
Moulé à injection
Soudure à Douille



da OD		SDR 7.4 / ISO 3.2 / PN 20							Item No.
		NPT	dsp	L	t	L2	sw	Weight Poids kg	
mm	Nom.	mm	mm	mm	mm	mm	mm		
20	1/2"	1/2"	29.5	45.0	14.5	16	32	0.04	K.034.2021.07
25	3/4"	3/4"	35.0	50.5	16.0	18	41	0.06	K.034.2526.07
32	1"	1"	42.5	57.0	18.1	20	46	0.09	K.034.3233.07
40	1-1/4"	1-1/4"	52.0	62.5	20.5	24	55	0.15	K.034.4041.07
50	1-1/2"	1-1/2"	64.0	68.0	23.5	26	70	0.24	K.034.5051.07
63	2"	2"	80.0	74.0	27.4	30	85	0.40	K.034.6364.07

Male Threaded Adaptors – MNPT

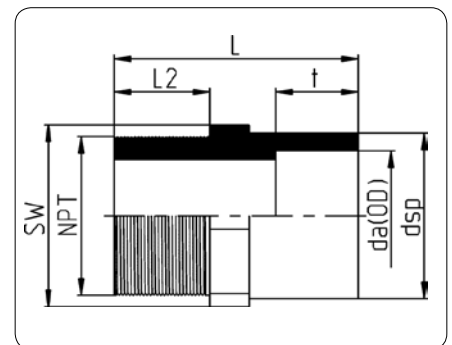
Product 035.1

Unpigmented PVDF
Injection moulded
Socket Welding

Adapteurs Filetés Males – MNPT

Produit 035.1

PVDF Naturel
Moulé à injection
Soudure à Douille



da OD		SDR 7.4 / ISO 3.2 / PN 20							Item No.
		NPT	dsp	L	t	L2	sw	Weight Poids kg	
mm	Nom.	mm	mm	mm	mm	mm	mm		
20	1/2"	3/4"	25	51	17.2	20	27.5	0.02	K.035.2026.07
25	3/4"	1"	32	61	19.5	24	39.5	0.05	K.035.2533.07
32	1"	1-1/4"	40	66	21.5	27	45.5	0.07	K.035.3241.07
40	1-1/4"	1-1/2"	50	74	24.0	29	60.0	0.12	K.035.4051.07
50	1-1/2"	2"	63	78	29.0	31	71.0	0.18	K.035.5064.07

Socket fittings socket are SDR7.4 but when installed with SDR21 piping are rated to only SDR21. Mechanical socket fittings (flanges, unions) are automatically rated to PN10 pressures.

Fittings socket ont un indice de SDR7.4, mais deviennent SDR21 quand installes avec la tuyauterie SDR21. Fittings socket mechaniques (brides, unions) ont automatiquement un indice de SDR21.

PVDF Piping System



ANSI Flange Adaptors

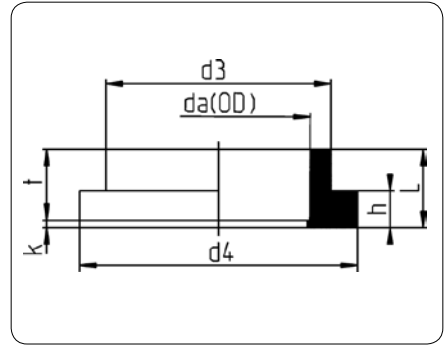
Product 052.1

Unpigmented PVDF
Injection Moulded
Socket Welding
Used together with Backing Rings
(page 28) for flange connections

Adapteurs de Bride ANSI

Produit 052.1

PVDF Naturel
Moulé à injection
Soudure à Douille
Utilisé avec des anneaux de support (page 28)
pour des raccords de bride



da OD		SDR 7.4 / ISO 3.2 / PN 20						Item No.
		d3	d4	h	k	t	Weight Poids kg	
mm	Nom.	mm	mm	mm	mm	mm		
16	3/8"	27	44.5	6	5	15	0.02	K.052.1016.07
20	1/2"	27	44.5	6	5	16	0.03	K.052.1020.07
25	3/4"	33	54.1	7	5	17	0.04	K.052.1025.07
32	1"	41	63.5	7	5	20	0.05	K.052.1032.07
40	1-1/4"	50	71.5	8	5	21	0.08	K.052.1040.07
50	1-1/2"	61	82.6	8	5	25	0.10	K.052.1050.07
63	2"	76	100.4	9	5	28	0.15	K.052.1063.07
75	2-1/2"	90	117.0	10	5	32	0.23	K.052.1075.07
90	3"*	109	125.0	11	5	36	0.31	K.052.1090.07
110	4"*	131	150.0	12	5	43	0.46	K.052.0110.07

* Flange diameter d4 is slightly smaller than ANSI standard.

* Diamètre de la bride d4 est légèrement moindre que ANSI-standard.

Unions

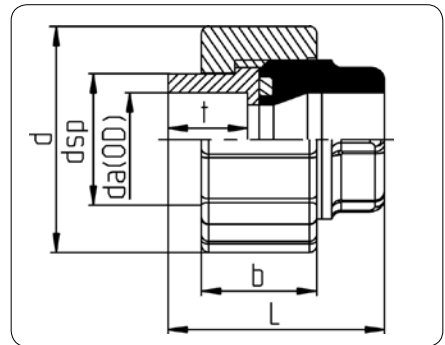
Product 024.11

Unpigmented PVDF
with Viton O-Rings*
Injection moulded
Socket Welding

Unions

Produit 024.11

PVDF Naturel
avec bague de Viton*
Moulé à injection
Soudure à Douille



da OD		SDR 7.4 / ISO 3.2 / PN 20					Weight Poids kg	Item No.
		dsp	L	t	d	b		
mm	Nom.	mm	mm	mm	mm	mm		
20	1/2"	27.3	45	16.0	47	24	0.06	K.024.1120.07
25	3/4"	35.7	49	18.0	57	26	0.10	K.024.1125.07
32	1"	41.3	53	20.0	64	30	0.14	K.024.1132.07
40	1-1/4"	52.8	59	22.0	78	31	0.22	K.024.1140.07
50	1-1/2"	58.6	67	24.5	89	35	0.28	K.024.1150.07
63	2"	73.6	79	29.0	109	39	0.50	K.024.1163.07

* EPDM or PTFE covered O-rings are also available.

* Les bagues d'EPDM ou couvertes de PTFE sont également disponibles

Socket fittings socket are SDR7.4 but when installed with SDR21 piping are rated to only SDR21. Mechanical socket fittings (flanges, unions) are automatically rated to PN10 pressures.

Fittings socket ont un indice de SDR7.4, mais deviennent SDR21 quand installés avec la tuyauterie SDR21. Fittings socket mécaniques (brides, unions) ont automatiquement un indice de SDR21.

PVDF Piping System



Valves

Diaphragm Valves

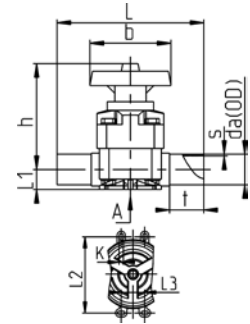
Manually Operated
Product 342.10

Unpigmented PVDF body
One Piece PTFE/EPDM Diaphragm
Contact or IR Butt Fusion

Vannes à Diaphragme

Contrôlée Manuellement
Produit 342.10

Corps PVDF sans pigment
Diaphragme PTFE/EPDM d'une pièce
Fusion Bout à Bout IR ou Contact



da OD		SDR 21 / MOP 10 bar							
		s	L	L1	L2	L3	h	Weight Poids kg	Item No.
mm	Nom	mm	mm	mm	mm	mm	mm		
20	1/2"	1.9	133	16.5	24.5	0.0	100	0.452	K.342.1020.21
25	3/4"	1.9	144	16.5	24.5	0.0	100	0.500	K.342.1025.21
32	1"	2.4	154	20.5	24.5	0.0	107	0.717	K.342.1032.21
40	1-1/4"	2.4	193	25.5	44.0	0.0	144	1.560	K.342.1040.21
50	1-1/2"	3.0	194	32.0	44.0	0.0	144	1.680	K.342.1050.21
63	2"	3.0	224	38.5	44.0	0.0	170	2.420	K.342.1063.21
75	2-1/2"	3.6	284	25.0	230.0	0.0	254	5.768	K.342.1075.21
90	3"	4.3	310	25.0	230.0	0.0	254	5.795	K.342.1090.21
110	4"	5.3	340	25.0	280.0	85.0	320	10.740	K.342.1011.21

Check Valve with Spring

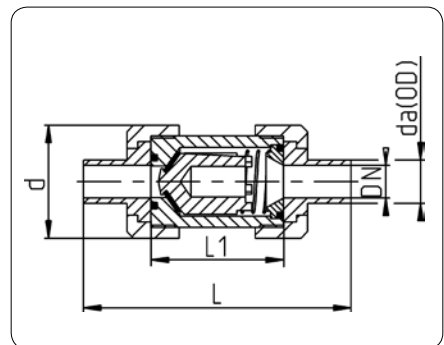
Product 336.15

Unpigmented PVDF Body
FPM Seals
Injection moulded
Butt (IR or Contact) fusion

Clapets anti-retour avec ressort

Produit 336.15

PVDF Naturel
Joints Toriques FPM
Moulé à injection
Bout fusion (IR ou contact)



da OD mm		SDR 11 / Max. 150 psi (10 bar)					Weight Poids kg	Item No.
		s	L	L1	d			
mm	mm	mm	mm	mm	mm			
20	15	1.9	124.0	61	52.5	0.207		K.336.1520.21
25	20	1.9	143.0	69	61.5	0.226		K.336.1525.21
32	25	2.4	151.0	73	69.0	0.416		K.336.1532.21
40	32	2.4	171.0	83	83.0	0.649		K.336.1540.21
50	40	3.0	192.0	95	99.0	1.012		K.336.1550.21
63	50	3.0	219.0	108	115.5	1.567		K.336.1563.21
75	65	3.6	278.0	133	149.0	3.104		K.336.1575.21
90	75	2.8	295.0	161	185.5	5.670		K.336.1590.33

PVDF Piping System

T-Diaphragm Valves

Manually Operated
Product 343

"Dead Leg" design
Unpigmented PVDF body
One-piece PTFE/EPDM diaphragm
Injection moulded
Butt (IR or Contact) fusion
or electro-fusion

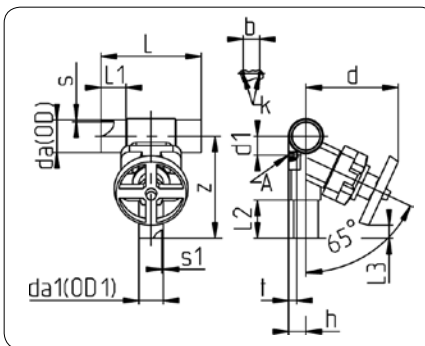
Vannes Diaphragme-T

Contrôlée Manuellement
Produit 343

Conception de "vannes zéro stagnation"
Corps PVDF sans pigment
Diaphragme d'une seule pièce en PTFE/EPDM
Moulé à injection
Bout fusion (IR ou contact)
ou fusion l'électro-douille



Valves



da/da1 OD/OD1 mm	DN mm	SDR 21 / Max. 150 psi (10 bar)					
		Item No.	Weight Poids kg	Price Prix	c _v mm	s mm	s1 mm
20/20	20/15	K.343.2020.21	0.62	818.00	c.f.	1.9	1.9
25/20	20/15	K.343.2520.21	0.60	818.00	4.06	1.9	1.9
25/25	20/20	K.343.2525.21	0.61	818.00	4.06	1.9	1.9
32/20	25/15	K.343.3220.21	0.89	980.00	12.88	2.4	1.9
32/25	25/20	K.343.3225.21	0.89	980.00	13.16	2.4	1.9
32/32	25/25	K.343.3232.21	0.93	980.00	13.65	2.4	2.4
40/20	32/15	K.343.4020.21	0.93	1,137.00	13.93	2.4	1.9
40/25	32/20	K.343.4025.21	0.93	1,137.00	14.35	2.4	1.9
40/32	32/25	K.343.4032.21	0.94	1,137.00	14.70	2.4	2.4
40/40	40/40	K.343.4040.21	2.73	1,878.00	c.f.	2.4	2.4
50/20	40/15	K.343.5020.21	1.04	1,207.00	15.12	3.0	1.9
50/25	40/20	K.343.5025.21	1.03	1,207.00	15.40	3.0	1.9
50/32	40/25	K.343.5032.21	1.04	1,207.00	15.96	3.0	2.4
50/40	50/40	K.343.5040.21	3.01	1,894.00	c.f.	3.0	2.4
50/50	50/50	K.343.5050.21	3.02	1,894.00	c.f.	3.0	3.0
63/20	50/15	K.343.6320.21	1.12	1,312.00	15.89	3.0	1.9
63/25	50/20	K.343.6325.21	1.12	1,312.00	16.31	3.0	1.9
63/32	50/25	K.343.6332.21	1.13	1,312.00	16.80	3.0	2.4
63/40	50/32	K.343.6340.21	3.19	2,157.00	30.45	3.0	2.4
63/50	50/40	K.343.6350.21	3.19	2,157.00	35.21	3.0	3.0
63/63	50/50	K.343.6363.21	3.16	2,157.00	40.18	3.0	3.0
75/25	65/20	K.343.7525.21	1.29	2,085.00	17.01	3.6	1.9
75/32	65/25	K.343.7532.21	1.28	2,085.00	17.50	3.6	2.4
75/40	63/32	K.343.7540.21	3.26	2,612.00	31.29	3.6	2.4
75/50	63/40	K.343.7550.21	3.25	2,612.00	36.40	3.6	3.0
75/63	63/50	K.343.7563.21	3.22	2,612.00	40.74	3.6	3.0
90/20	80/15	K.343.9020.21	1.50	2,793.00	15.89	4.3	1.9
90/25	80/20	K.343.9025.21	1.49	2,793.00	17.43	4.3	1.9
90/32	80/25	K.343.9032.21	1.50	2,793.00	18.06	4.3	2.4
90/40	80/32	K.343.9040.21	3.43	3,407.00	32.20	4.3	2.4
90/50	80/40	K.343.9050.21	3.36	3,407.00	37.24	4.3	3.0
90/63	80/50	K.343.9063.21	3.42	3,407.00	42.07	4.3	3.0
110/20	100/20	K.343.1120.21	1.79	3,121.00	15.89	5.3	1.9
110/25	100/20	K.343.1125.21	1.74	3,121.00	17.92	5.3	1.9
110/32	100/25	K.343.1132.21	1.80	3,121.00	18.55	5.3	2.4
110/40	100/32	K.343.1140.21	3.77	3,754.00	32.20	5.3	2.4
110/50	100/40	K.343.1150.21	3.78	3,754.00	38.36	5.3	3.0
110/63	100/50	K.343.1163.21	3.75	4,438.00	43.61	5.3	3.0

T-Diaphragm Valves

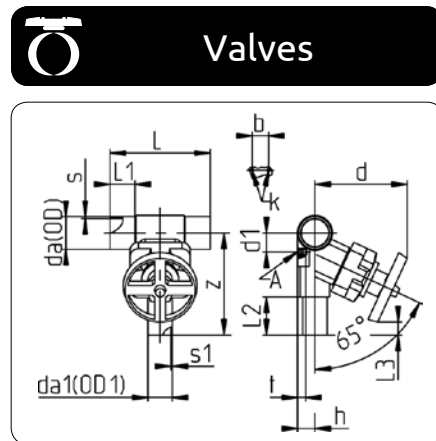
Manually Operated
Product 343

"Dead Leg" design
Unpigmented PVDF body
One-piece PTFE/EPDM diaphragm
Injection moulded
Butt (IR or Contact) fusion
or electro-fusion

Vannes Diaphragme-T

contrôlée manuellement
Produit 343

Conception de "vannes zéro stagnation"
Corps PVDF sans pigment
Diaphragme d'une seule pièce en PTFE/EPDM
Moulé à injection
Bout fusion (IR ou contact)
ou fusion l'électro-douille



da/da1 OD/OD1 mm	L mm	L1 mm	L2 mm	L3 mm	h mm	d mm	z mm	t mm	d1 mm	b mm	K
20/20	164	33.5	67.0	38	13.0	118	144.0	20	26.0	25	M6
25/20	164	36	67.0	38	14.0	118	144.0	20	26.0	25	M6
25/25	164	36	70.0	38	15.0	118	142.0	20	26.0	25	M6
32/20	164	36	58.0	36	17.0	128	150.0	20	30.0	25	M6
32/25	164	36	60.0	36	17.0	128	150.0	20	30.0	25	M6
32/32	164	36	61.0	36	18.0	128	150.0	20	30.0	25	M6
40/20	184	46	58.0	36	21.0	128	155.0	20	35.0	25	M6
40/25	184	46	60.0	36	21.5	128	155.0	20	35.0	25	M6
40/32	184	46	61.0	36	21.5	128	155.0	20	35.0	25	M6
40/40	237	47	101.5	36	21.5	189	236.0	47	47.0	45	M8
50/20	184	46	59.0	36	26.5	128	160.5	20	39.0	25	M6
50/25	184	46	60.0	36	26.5	128	160.5	20	39.0	25	M6
50/32	184	46	61.0	36	26.5	128	160.0	20	39.0	25	M6
50/40	237	46.5	96.0	36	25.5	200	238.0	57	53.0	45	M8
50/50	235	46	100.0	36	26.5	200	238.0	57	53.0	45	M8
63/20	184	46	58.0	36	33.0	128	168.0	20	46.5	25	M6
63/25	184	46	60.0	36	33.0	128	168.0	20	46.5	25	M6
63/32	184	46	61.0	36	33.0	128	168.0	20	46.5	25	M6
63/40	235	46	88.5	50	33.0	199	242.0	57	60.0	45	M8
63/50	235	46	93.5	50	33.0	199	242.0	57	60.0	45	M8
63/63	235	46	100.0	50	33.0	199	242.0	57	60.0	45	M8
75/25	210	33	60.5	38	23.0	133	179.0	33	56.0	25	M6
75/32	210	33	65.0	38	23.0	133	179.0	33	56.0	25	M6
75/40	210	33	88.0	50	39.0	199	248.0	63	65.0	45	M8
75/50	210	33	93.0	50	39.0	199	248.0	63	65.0	45	M8
75/63	210	33	100.0	50	39.0	199	248.0	63	65.0	45	M8
90/20	210	33	58.0	38	23.5	135	188.0	36	65.0	25	M6
90/25	210	33	60.5	38	23.5	135	188.0	36	65.0	25	M6
90/32	210	33	64.0	38	23.5	135	188.0	36	65.0	25	M6
90/40	210	33	88.0	50	46.5	199	255.0	68	72.0	45	M8
90/50	210	33	93.5	50	46.5	199	255.0	65	72.0	45	M8
90/63	210	33	100.0	50	46.5	199	255.0	65	72.0	45	M8
110/20	210	33	55.0	35	33.5	140	195.0	48.5	71.0	25	M6
110/25	210	33	57.5	38	33.5	140	198.0	43	71.0	25	M6
110/32	210	33	61.0	38	33.5	140	198.0	43	71.0	25	M6
110/40	210	33	88.5	50	56.5	199	267.0	75	72.0	45	M8
110/50	210	33	93.5	50	56.5	199	267.0	78	72.0	45	M8
110/63	210	33	100.0	50	56.5	199	267.0	75	72.0	45	M8

T-Diaphragm Valves

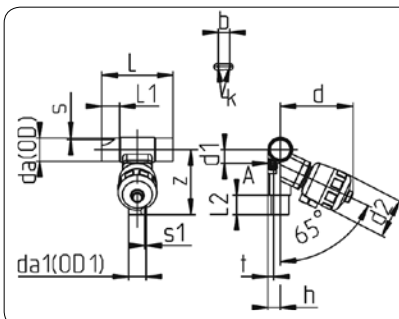
Pneumatic

"Dead Leg" design
Unpigmented PVDF body
One-piece PTFE/EPDM diaphragm
Injection moulded
Butt (IR or Contact) fusion
or electro-fusion

Vannes Diaphragme-T

Pneumatique

Conception de "vannes zéro stagnation"
Corps PVDF sans pigment
Diaphragme d'une seule pièce en PTFE/EPDM
Moulé à injection
Bout fusion (IR ou contact)
ou fusion l'électro-douille



da/da1 OD/OD1 mm	DN mm	SDR 21 / Max. 150 psi (10 bar)						
		Normally Closed (345)		Normally Open (346)		Double Acting (347)		C _v mm
		Item No.	Weight Poids kg	Item No.	Weight Poids kg	Item No.	Weight Poids kg	
20/20	15/15	K.345.2020.21	2.00	K.346.2020.21	1.20	K.347.2020.21	1.10	3.88
25/20	20/15	K.345.2520.21	1.94	K.346.2520.21	1.14	K.347.2520.21	1.04	4.06
25/25	20/20	K.345.2525.21	1.94	K.346.2525.21	1.14	K.347.2525.21	1.04	4.06
32/20	25/15	K.345.3220.21	2.14	K.346.3220.21	1.55	K.347.3220.21	1.45	12.88
32/25	25/20	K.345.3225.21	2.07	K.346.3225.21	1.55	K.347.3225.21	1.45	13.16
32/32	25/25	K.345.3232.21	2.07	K.346.3232.21	1.55	K.347.3232.21	1.45	13.65
40/20	32/15	K.345.4020.21	2.12	K.346.4020.21	1.60	K.347.4020.21	1.50	13.93
40/25	32/20	K.345.4025.21	2.12	K.346.4025.21	1.60	K.347.4025.21	1.50	14.35
40/32	32/25	K.345.4032.21	2.12	K.346.4032.21	1.60	K.347.4032.21	1.50	14.70
40/40	40/40	K.345.4040.21	7.11	K.346.4040.21	4.92	K.347.4040.21	4.42	28.90
50/20	40/15	K.345.5020.21	2.19	K.346.5020.21	1.67	K.347.5020.21	1.57	15.12
50/25	40/20	K.345.5025.21	2.18	K.346.5025.21	1.66	K.347.5025.21	1.56	15.40
50/32	40/25	K.345.5032.21	2.18	K.346.5032.21	1.66	K.347.5032.21	1.56	15.96
50/50	50/50	K.345.5050.21	7.275	K.346.5050.21	5.20	K.347.5050.21	4.70	33.45
63/20	50/15	K.345.6320.21	2.26	K.346.6320.21	1.74	K.347.6320.21	1.64	15.89
63/25	50/20	K.345.6325.21	2.26	K.346.6325.21	1.74	K.347.6325.21	1.64	16.31
63/32	50/25	K.345.6332.21	2.26	K.346.6332.21	1.74	K.347.6332.21	1.64	16.80
63/40	50/32	K.345.6340.21	7.13	K.346.6340.21	5.43	K.347.6340.21	4.93	30.45
63/50	50/40	K.345.6350.21	7.12	K.346.6350.21	5.42	K.347.6350.21	4.92	35.21
63/63	50/50	K.345.6363.21	7.12	K.346.6363.21	5.42	K.347.6363.21	4.92	40.18
75/25	65/20	K.345.7525.21	2.43	K.346.7525.21	1.91	K.347.7525.21	1.81	17.01
75/32	65/25	K.345.7532.21	2.44	K.346.7532.21	1.92	K.347.7532.21	1.82	17.50
75/40	63/32	K.345.7540.21	7.26	K.346.7540.21	5.56	K.347.7540.21	5.06	31.29
75/50	63/40	K.345.7550.21	7.25	K.346.7550.21	5.56	K.347.7550.21	5.05	36.40
75/63	63/50	K.345.7563.21	7.22	K.346.7563.21	5.52	K.347.7563.21	5.02	40.74
90/20	80/15	K.345.9020.21	2.62	K.346.9020.21	3.80	K.347.9020.21	1.97	15.89
90/25	80/20	K.345.9025.21	2.62	K.346.9025.21	2.10	K.347.9025.21	2.00	17.43
90/32	80/25	K.345.9032.21	2.63	K.346.9032.21	2.11	K.347.9032.21	2.01	18.06
90/40	80/32	K.345.9040.21	7.44	K.346.9040.21	5.74	K.347.9040.21	5.24	32.20
90/50	80/40	K.345.9050.21	7.44	K.346.9050.21	5.74	K.347.9050.21	5.24	37.24
90/63	80/50	K.345.9063.21	7.41	K.346.9063.21	5.71	K.347.9063.21	5.24	42.07
110/20	100/15	K.345.1120.21	2.99	K.346.1120.21	2.44	K.347.1120.21	2.34	15.89
110/25	100/20	K.345.1125.21	1.06	K.346.1125.21	2.42	K.347.1125.21	2.32	17.92
110/32	100/25	K.345.1132.21	2.93	K.346.1132.21	2.41	K.347.1132.21	2.31	18.55
110/40	100/32	K.345.1140.21	7.77	K.346.1140.21	6.15	K.347.1140.21	5.66	32.20
110/50	100/40	K.345.1150.21	7.77	K.346.1150.21	6.07	K.347.1150.21	5.57	38.36
110/63	100/50	K.345.1163.21	7.62	K.346.1163.21	5.92	K.347.1163.21	5.42	43.61

PVDF Piping System

T-Diaphragm Valves

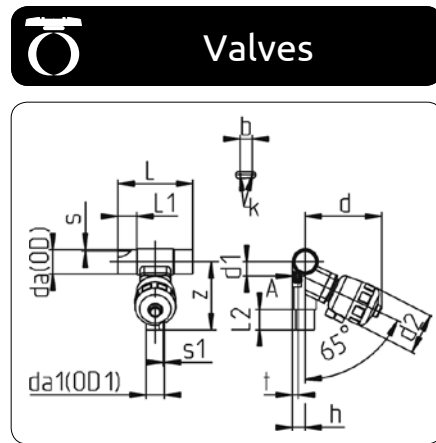
Pneumatic

"Dead Leg" design
Unpigmented PVDF body
One-piece PTFE/EPDM diaphragm
Injection moulded
Butt (IR or Contact) fusion
or electro-fusion

Vannes Diaphragme-T

Pneumatique

Conception de "vannes zéro stagnation"
Corps PVDF sans pigment
Diaphragme d'une seule pièce en PTFE/EPDM
Moulé à injection
Bout fusion (IR ou contact)
ou fusion l'électro-douille



da/da1 OD/OD1 mm	s mm	s1 mm	L mm	L1 mm	L2 mm	d mm	h mm	d2 mm	z mm	t mm	d1 mm	b mm	K
20/20	1.9	1.9	164	36	67.0	169	13.0	101	144.0	20	26.0	25	M6
25/20	1.9	1.9	164	36	67.0	169	14.0	101	144.0	20	26.0	25	M6
25/25	1.9	1.9	164	36	70.0	169	15.0	101	144.0	20	26.0	25	M6
32/20	2.4	1.9	164	36	58.0	179	17.0	101	151.5	20	30.0	25	M6
32/25	2.4	1.9	164	36	60.0	179	17.0	101	151.5	20	30.0	25	M6
32/32	2.4	2.4	164	36	61.0	179	18.0	101	151.5	20	30.0	25	M6
40/20	2.4	1.9	184	46	58.0	179	21.0	101	156.5	20	35.0	25	M6
40/25	2.4	1.9	184	46	60.0	179	21.5	101	156.5	20	35.0	25	M6
40/32	2.4	2.4	184	46	61.0	179	21.5	101	156.5	20	35.0	25	M6
40/40	2.4	2.4	235	46	88.5	277	21.5	153	236.0	47	47.0	45	M6
50/20	3.0	1.9	184	46	59.0	179	26.5	101	160.5	20	39.0	25	M6
50/25	3.0	1.9	184	46	60.0	179	26.5	101	160.5	20	39.0	25	M6
50/32	3.0	2.4	184	46	61.0	179	26.5	101	160.5	20	39.0	25	M6
50/50	3.0	3.0	235	46	93.0	288	26.5	153	238.0	57	57.0	45	M6
63/20	3.0	1.9	184	46	58.0	179	33.0	101	168.0	20	46.5	25	M6
63/25	3.0	1.9	184	46	60.0	179	33.0	101	168.0	20	46.5	25	M6
63/32	3.0	2.4	184	46	61.0	179	33.0	101	168.0	20	46.5	25	M6
63/40	3.0	2.4	236	46	88.5	286	33.0	153	243.0	57	60.0	45	M8
63/50	3.0	3.0	236	46	93.0	286	33.0	153	243.0	57	60.0	45	M8
63/63	3.0	3.0	236	46	100.0	286	33.0	153	242.0	57	60.0	45	M8
75/25	3.6	1.9	210	33	60.5	184	23.0	101	179.0	33	56.0	25	M6
75/32	3.6	2.4	210	33	65.0	184	23.0	101	179.0	33	56.0	25	M6
75/40	3.6	2.4	210	33	88.5	284	39.0	153	248.0	60	65.0	45	M8
75/50	3.6	3.0	210	33	93.0	284	39.0	153	248.0	60	65.0	45	M8
75/63	3.6	3.0	210	33	100.0	284	39.0	153	248.0	60	65.0	45	M8
90/20	4.3	1.9	210	33	60.5	187	23.5	101	188.0	36	65.0	25	M6
90/25	4.3	1.9	210	33	60.5	187	23.5	101	188.0	36	65.0	25	M6
90/32	4.3	2.4	210	33	64.0	187	23.5	101	188.0	36	65.0	25	M6
90/40	4.3	2.4	210	33	88.5	286	46.5	153	254.0	65	72.0	45	M8
90/50	4.3	3.0	210	33	93.5	286	46.5	153	255.0	65	72.0	45	M8
90/63	4.3	3.0	210	33	100.0	286	46.5	153	255.0	65	72.0	45	M8
110/20	5.3	1.9	210	33	57.8	191	33.5	101	198.0	43	71.0	25	M6
110/25	5.3	1.9	210	33	57.5	191	33.5	101	198.0	43	71.0	25	M6
110/32	5.3	2.4	210	33	61.0	191	33.5	101	198.0	43	71.0	25	M6
110/40	5.3	2.4	210	33	93.5	286	56.5	153	267.0	75	72.0	45	M8
110/50	5.3	3.0	210	33	93.5	286	56.5	153	267.0	75	72.0	45	M8
110/63	5.3	3.0	210	33	100.0	286	56.5	153	267.0	75	72.0	45	M8